





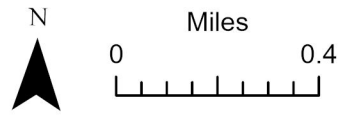
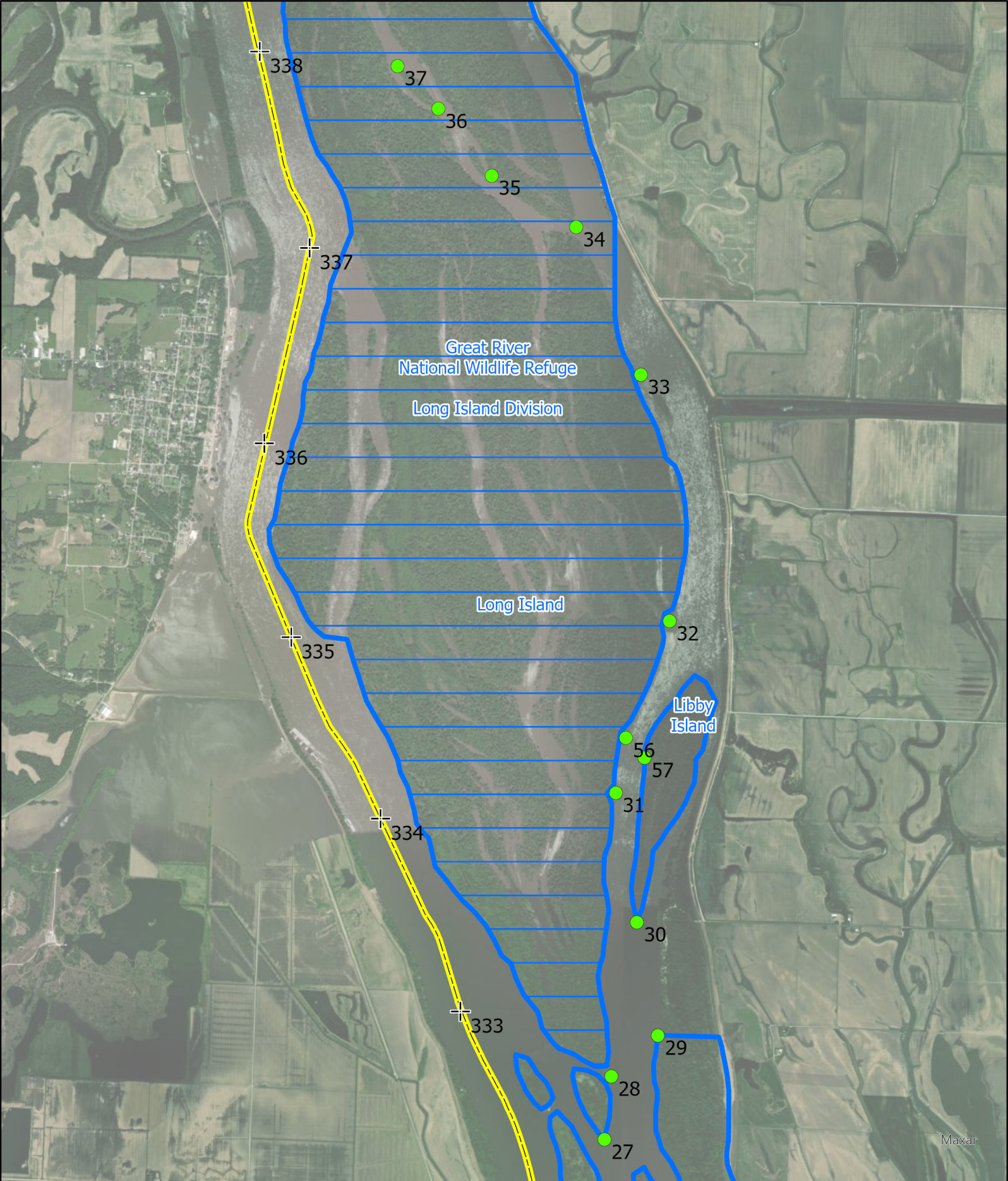


-  IDNR Managed Area
-  State /County Line
-  Waterfowl Blind
-  River Mile
-  Boat Access
-  Quincy Bay WMU



Mississippi River Pool 21





- IDNR Managed Area
- State /County Line
- Waterfowl Blind
- Great River NWR
- + River Mile
- Boat Access

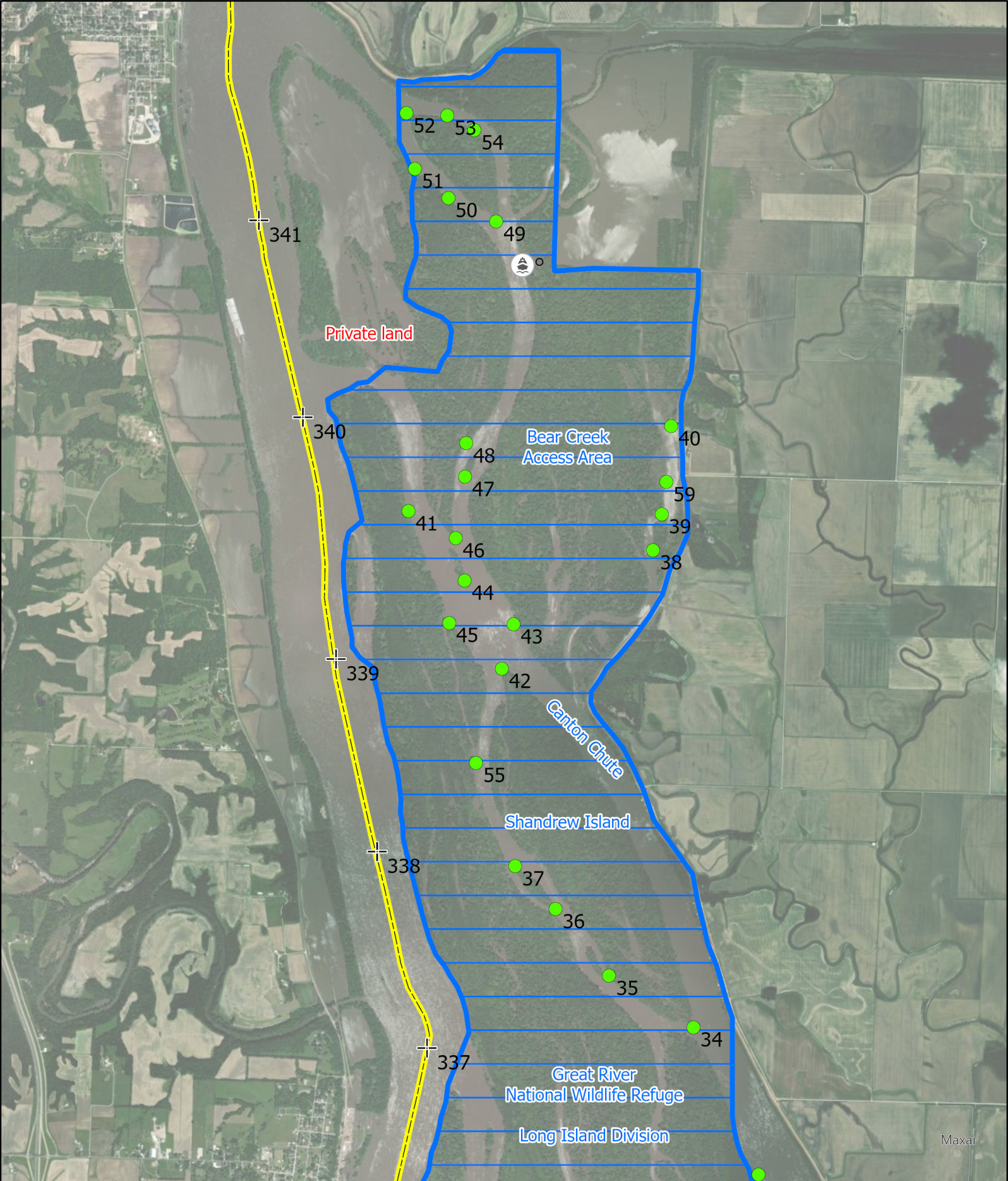


Mississippi River Pool 21

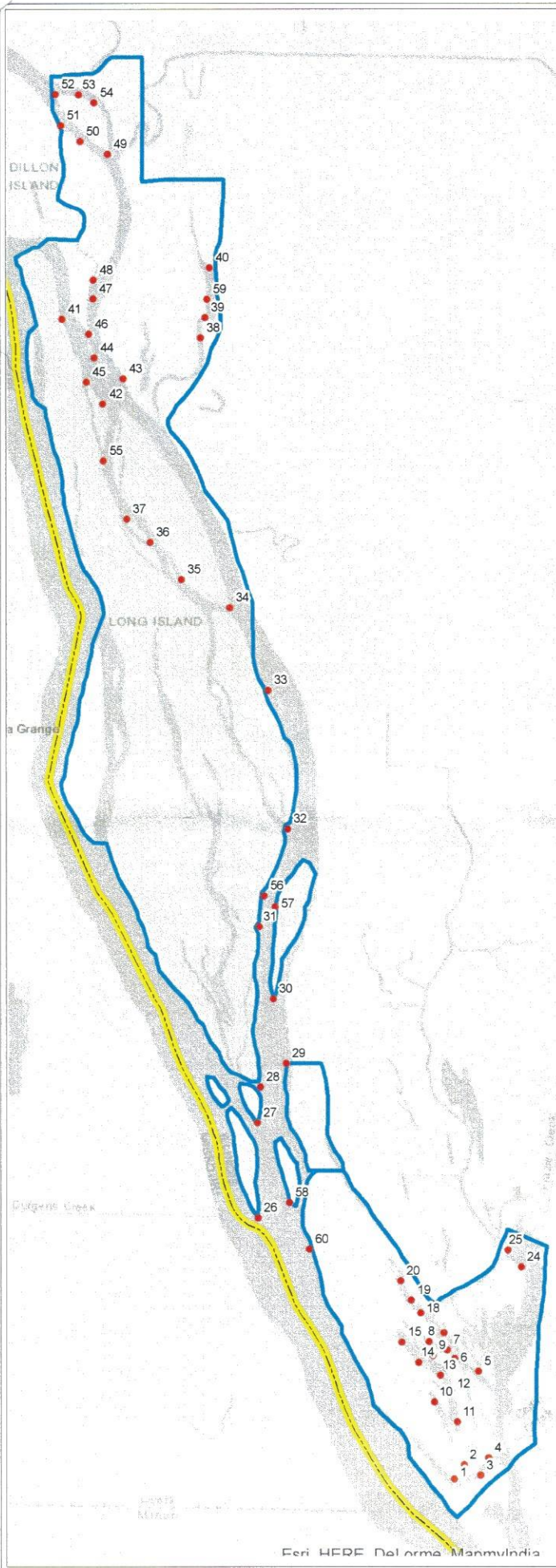
N

Miles

Maxar



Maxar



Blind #	Decimal Degree		Degree, Minute, Second	
	Y	X	Lat	Long
1	39.94934	-91.4286	39° 56' 57.621" N	91° 25' 42.865" W
2	39.95114	-91.427	39° 57' 4.097" N	91° 25' 37.215" W
3	39.94986	-91.4243	39° 56' 59.510" N	91° 25' 27.561" W
4	39.95202	-91.423	39° 57' 7.266" N	91° 25' 22.731" W
5	39.9628	-91.4247	39° 57' 46.086" N	91° 25' 28.756" W
6	39.96444	-91.4285	39° 57' 51.972" N	91° 25' 42.682" W
7	39.96547	-91.4297	39° 57' 55.696" N	91° 25' 47.045" W
8	39.96653	-91.4327	39° 57' 59.491" N	91° 25' 57.688" W
9	39.96479	-91.4321	39° 57' 53.227" N	91° 25' 55.609" W
10	39.95897	-91.4319	39° 57' 32.279" N	91° 25' 54.694" W
11	39.95651	-91.4281	39° 57' 23.440" N	91° 25' 41.335" W
12	39.96033	-91.4291	39° 57' 37.187" N	91° 25' 44.741" W
13	39.96229	-91.4309	39° 57' 44.243" N	91° 25' 51.101" W
14	39.96396	-91.4344	39° 57' 50.246" N	91° 26' 3.822" W
15	39.9665	-91.4371	39° 57' 59.400" N	91° 26' 13.717" W
16	39.96762	-91.4303	39° 58' 3.426" N	91° 25' 49.164" W
17	39.96826	-91.4323	39° 58' 5.725" N	91° 25' 56.291" W
18	39.97012	-91.4341	39° 58' 12.434" N	91° 26' 2.755" W
19	39.97173	-91.4356	39° 58' 18.211" N	91° 26' 8.184" W
20	39.97417	-91.4374	39° 58' 26.993" N	91° 26' 14.482" W
23	39.95294	-91.4253	39° 57' 10.578" N	91° 25' 31.229" W
24	39.97592	-91.4177	39° 58' 33.325" N	91° 25' 3.683" W
25	39.97802	-91.4198	39° 58' 40.877" N	91° 25' 11.402" W
26	39.98203	-91.4606	39° 58' 55.288" N	91° 27' 38.133" W
27	39.99393	-91.4606	39° 59' 38.160" N	91° 27' 38.326" W
28	39.9984	-91.4601	39° 59' 54.235" N	91° 27' 36.534" W
29	40.00137	-91.4559	40° 0' 4.925" N	91° 27' 21.355" W
30	40.00941	-91.4581	40° 0' 33.867" N	91° 27' 29.120" W
31	40.01845	-91.4603	40° 1' 6.430" N	91° 27' 37.101" W
32	40.03068	-91.4557	40° 1' 50.441" N	91° 27' 20.495" W
33	40.04805	-91.4588	40° 2' 52.968" N	91° 27' 31.786" W
34	40.05837	-91.4651	40° 3' 30.118" N	91° 27' 54.382" W
35	40.06188	-91.473	40° 3' 42.759" N	91° 28' 22.691" W
36	40.06651	-91.478	40° 3' 59.448" N	91° 28' 40.902" W
37	40.06947	-91.4819	40° 4' 10.087" N	91° 28' 54.676" W
38	40.09203	-91.4698	40° 5' 31.295" N	91° 28' 11.271" W
39	40.09458	-91.4691	40° 5' 40.483" N	91° 28' 8.611" W
40	40.10082	-91.4684	40° 6' 2.953" N	91° 28' 6.100" W
41	40.0944	-91.4924	40° 5' 39.853" N	91° 29' 32.605" W
42	40.08384	-91.4857	40° 5' 1.834" N	91° 29' 8.476" W
43	40.08698	-91.4824	40° 5' 13.139" N	91° 28' 56.803" W
44	40.08958	-91.4871	40° 5' 22.491" N	91° 29' 13.466" W
45	40.08656	-91.4884	40° 5' 11.627" N	91° 29' 18.323" W
46	40.09256	-91.488	40° 5' 33.218" N	91° 29' 16.804" W
47	40.09691	-91.4873	40° 5' 48.877" N	91° 29' 14.105" W
48	40.09928	-91.4872	40° 5' 57.419" N	91° 29' 14.011" W
49	40.11499	-91.4849	40° 6' 53.975" N	91° 29' 5.623" W
50	40.1166	-91.4894	40° 6' 59.742" N	91° 29' 21.742" W
51	40.1186	-91.4925	40° 7' 6.970" N	91° 29' 33.071" W
52	40.12252	-91.4934	40° 7' 21.063" N	91° 29' 36.282" W
53	40.12241	-91.4896	40° 7' 20.688" N	91° 29' 22.676" W
54	40.12143	-91.4871	40° 7' 17.132" N	91° 29' 13.586" W
55	40.07671	-91.4856	40° 4' 36.168" N	91° 29' 8.330" W
56	40.02235	-91.4595	40° 1' 20.454" N	91° 27' 34.129" W
57	40.02096	-91.4577	40° 1' 15.469" N	91° 27' 27.818" W
58	39.98398	-91.4555	39° 59' 2.323" N	91° 27' 19.716" W
59	40.09686	-91.4687	40° 5' 48.699" N	91° 28' 7.382" W
60	39.97811	-91.4523	39° 58' 41.206" N	91° 27' 8.136" W