



Illinois Chronic Wasting Disease: 2024-2025 Surveillance and Management Report

(Project Period: 1 July 2024 - 30 June 2025)

Chris Jacques and Patrick McDonald
Wildlife Disease Program, Illinois Department of Natural Resources
22 August 2025



Executive Summary

First CWD positive: A suspect adult female deer from northwest Boone County was diagnosed with CWD in November 2002.

Total samples through 30 June 2024: 185,896

Total positives through 30 June 2024: 2,748

Total Number of counties affected through 30 June 2024: 25 (Adams, Boone, Bureau, Carroll, Cook, DeKalb, DuPage, Ford, Grundy, Jo Daviess, Kane, Kankakee, Kendall, Lake, LaSalle, Lee, Livingston, Marshall, McHenry, Ogle, Peoria, Putnam, Stephenson, Will, Winnebago).

General distribution through 30 June 2025: Total affected area (determined by a minimum convex polygon that includes all positives) has expanded to 20,036 mi². Five-hundred thirty-nine CWD-positive deer were identified from 12,444 usable deer samples collected statewide. Prevalence across the 21-county CWD endemic area (9.2%) has increased significantly over time (Figure 7) and constitutes the highest observed infection rate in the history of the program. Prevalence rates reported for adult male deer (10.8%) continues to be notably (~34%) higher than that of adult females (7.1%, Figure 7). The current disease outbreak area consists of a central core area of increasing disease prevalence throughout northern border counties (Boone, Jo Daviess, McHenry, Stephenson, Winnebago) continuing south into east-central counties (Grundy, Kendall, LaSalle, Livingston) and surrounded by disease foci that extend across agricultural landscapes more than 100 miles to the south and west (Appendices A-C). As in past years, a greater number of CWD-positive hunter-harvested deer were removed from Jo Daviess (n=84) County than any other county, followed by 7 counties where ≥20 CWD+ deer were harvested (Table 5). Surveillance resulted in identification of CWD-positive deer (n=6) in four new counties (Adams, Marshall, Peoria, Putnam) during FY2025, including 5 adult males taken by firearm hunters and 1 adult male showing clinical signs of disease infection during winter 2025; targeted surveillance sampling throughout these counties will occur during the 2025-2026 annual deer season. Disease foci far removed from the core area (Adams County, Figure 1) highlights the need to preserve the health of local deer herds and minimize movement of CWD into currently unaffected regions of the state using active management techniques, particularly sharpshooting and hunter harvest as these methods were most effective for managing CWD across northern Illinois during FY2025. IDNR must continue to evaluate the efficacy of sustainable CWD management throughout the endemic area and newly emerging counties of northern and central Illinois over the next several years, after which quantitative analyses of data collected during the Pilot project will inform whether current management techniques are warranted or should be limited to increased surveillance coupled with expansion of hunter testing across the state.

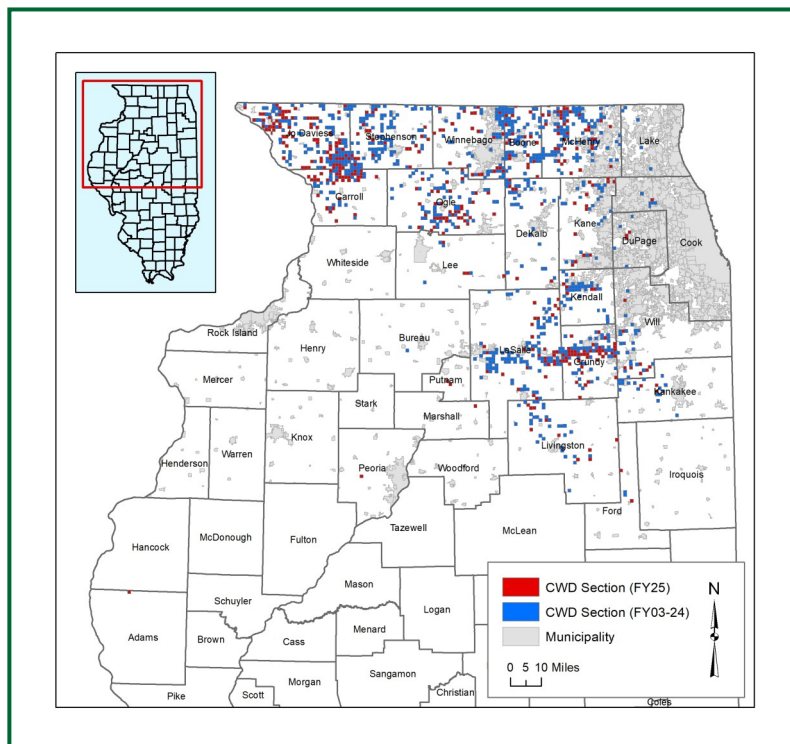


Figure 1. Distribution of all known CWD-infected deer identified in Illinois through 30 June 2025.

CWD Surveillance Protocols During FY2025 (1 July 2024 - 30 June 2025)

Testing: The majority (>99%) of CWD testing was conducted by the Wisconsin Veterinary Diagnostic Laboratory, University of Wisconsin-Madison. Polymerase chain reaction (PCR) was used for initial screening and immunohistochemistry (IHC) was used to confirm results of CWD tissues. Remaining samples collected from vehicle-killed and suspect deer were tested directly with

IHC at the Veterinary Medical Diagnostic Laboratory, University of Missouri-Columbia. Samples were initially screened using tissue from retropharyngeal lymph nodes (RPLN), followed by confirmatory testing of recut RPLN tissue.

Sampling of hunter-harvested deer: Three sources were used to provide tissue samples from adult (≥ 1.5 yr old) deer harvested by hunters: (1) mandatory firearm deer check stations in high-risk counties in northern Illinois; (2) designated voluntary drop-off testing locations in northern Illinois and Randolph County; and (3) cooperating meat lockers/taxidermists statewide who collected heads/sample tissues for IDNR.

Surveillance by other agencies/individuals authorized by special permits: Recipients of special permits from IDNR authorizing lethal deer removals were required to collect CWD samples when working in high-risk CWD areas or in areas needing additional surveillance. These permits included (1) Deer Population Control Permits (used by some agencies to control urban deer populations); (2) nuisance Deer Removal Permits (for crop depredation, etc.); and (3) Scientific Permits (various research projects).

Suspect (“target”) deer surveillance: Upon receiving reports from the public about sick appearing deer, IDNR staff collected samples from deer that exhibited signs/symptoms consistent with chronic wasting disease infection.

Surveillance from post-hunting season sharpshooting: Sharpshooting was conducted from mid-January through the end of March by trained IDNR staff. Sharpshooting was restricted to areas where CWD-infected deer had been identified (limited to lands within a 2-section buffer around known positive sections). In response to CWD infection identified in southeastern Missouri, Missouri Department of Conservation, in cooperation with IDNR also culled deer from the portion of Randolph County situated on the Missouri side of the Mississippi River navigation channel.

CWD Surveillance Results FY2025

Total number of CWD samples collected statewide: During FY2025, a total of 12,444 white-tailed deer were collected and sampled for CWD across Illinois; sampling efforts occurred primarily across the northern, west-central, and southern regions of the state (Figure 2). Mean number of deer sampled annually is 8,083 (SE=387), though ranges from 4,692 to 12,444 (Figure 3); CWD-positive deer were obtained primarily from hunter-harvest, IDNR sharpshooting, vehicle collisions/suspect animals (Figure 4) and summarized by county in relation to number of samples collected (Appendices A, B).

Number of usable samples collected: 12,444

Number of CWD-positive deer identified: 539. The total number of CWD-positive deer collected by county and year ranges from 14 in 2003 to 539 in 2025; # of positive cases has increased progressively and steadily since 2013 (Table 1).

Number of counties with positive deer: 25 — Adams (1), Boone (24), Bureau (0), Carroll (42), Cook (1), DeKalb (11), DuPage (3), Ford (2), Grundy (74), Jo Daviess (109), Kane (21), Kankakee (3), Kendall (8), Lake (0), LaSalle (39), Lee (12), Livingston (10), Marshall (2), McHenry (47), Ogle (50), Peoria (1), Putnam (2), Stephenson (23), Will (13), Winnebago (41)

Number of new CWD counties: 4

CWD prevalence information for the known CWD area (25 counties; adult deer from hunting sources only) —

Average CWD prevalence (all adult deer): 9.2% (427/4659)

Average CWD prevalence (adult males): 10.8% (279/2574)

Average CWD prevalence (adult females): 7.1% (148/2085)

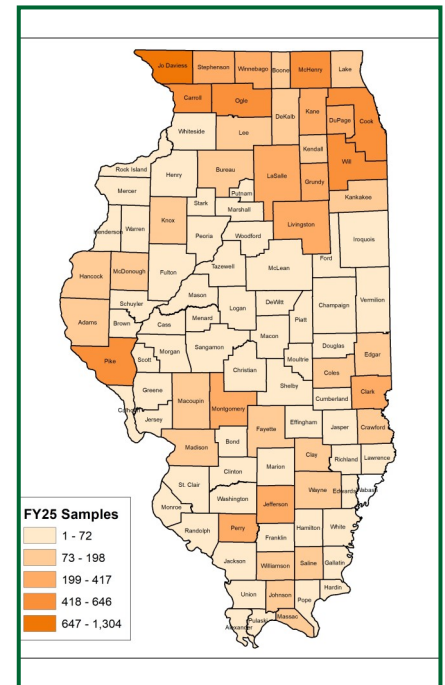


Figure 2. CWD sample distribution across Illinois during FY2025 (all sources).

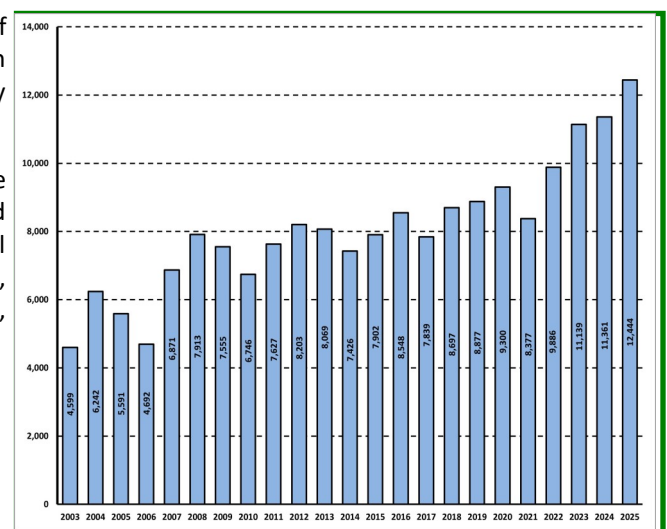
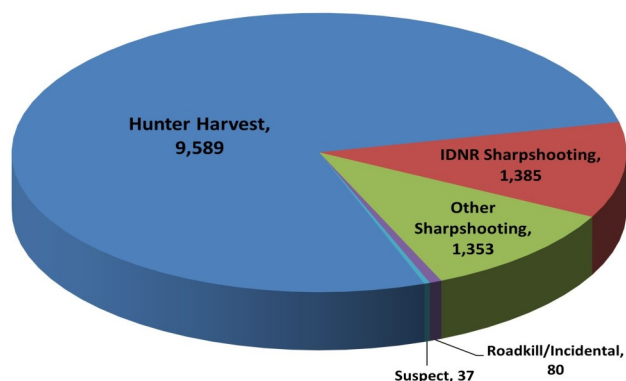


Figure 3. Number of CWD surveillance samples collected statewide each year during FY2003 through FY2025.

2024-2025 Illinois Deer Tested By Source (n=12,444)



2024-2025 CWD-Positive Deer Tested By Source (n=539)

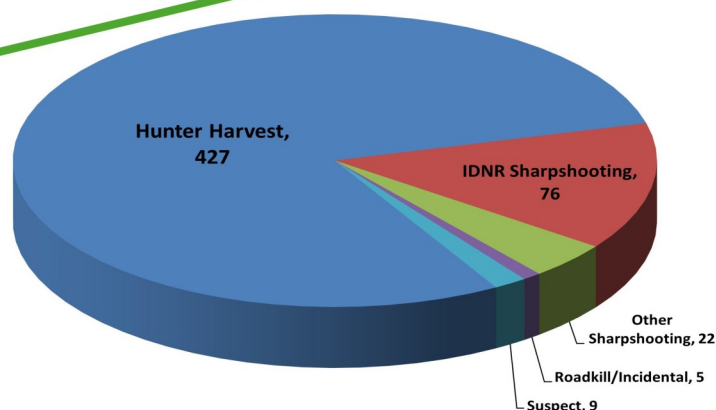


Figure 4. Number of CWD samples tested and number of positives identified by sampling source during FY2025 (1 July 2024 through 30 June 2025). *Note: Number tested includes all samples submitted for wild deer, regardless of whether a valid test result was obtained.*

Table 1. Number of CWD-positive deer collected by county and fiscal year across northern Illinois, November 2003 through June 2025.

	2003	2004	2005	2006	2007	2008	2009	2010	2011	2012	2013	2014	2015	2016	2017	2018	2019	2020	2021	2022	2023	2024	2025	Total
Adams	—	—	—	—	—	—	—	—	—	—	—	—	—	—	—	—	—	—	—	—	—	—	1	1
Boone	9	25	13	15	13	11	9	14	7	5	4	5	6	11	7	3	6	10	14	11	11	21	24	254
Bureau	—	—	—	—	—	—	—	—	—	—	—	—	—	—	—	—	—	—	—	—	—	1	—	1
Carroll	—	—	—	—	—	—	—	—	—	—	—	—	—	—	2	2	1	4	9	15	19	21	42	115
Cook	—	—	—	—	—	—	—	—	—	—	—	—	—	—	—	—	—	1	2	—	1	2	1	7
DeKalb	—	4	1	5	6	8	4	3	7	5	7	8	8	3	3	1	3	1	5	6	6	11	11	116
DuPage	—	—	—	—	—	—	—	—	—	—	1	—	—	—	—	—	—	1	1	1	—	1	3	8
Ford	—	—	—	—	—	—	—	—	—	—	—	—	—	—	—	—	—	—	—	—	—	1	2	3
Grundy	—	—	—	—	—	—	—	—	2	5	3	3	5	3	7	2	10	17	15	25	46	45	74	262
Jo Daviess	—	—	—	—	—	—	—	—	1	—	1	4	7	9	10	8	12	25	18	27	54	62	109	347
Kane	—	—	—	—	—	—	—	—	4	7	4	5	7	8	5	2	3	2	6	6	7	12	21	99
Kankakee	—	—	—	—	—	—	—	—	—	—	—	—	1	1	2	—	2	3	3	2	3	8	3	28
Kendall	—	—	—	—	—	—	—	—	—	—	1	4	6	6	6	1	5	11	9	13	13	8	8	91
Lake	—	—	—	—	—	—	—	—	—	—	—	1	—	—	—	—	—	—	1	1	1	2	—	6
LaSalle	—	—	—	—	1	—	—	—	3	—	1	2	6	5	4	5	6	20	19	28	59	60	39	258
Lee	—	—	—	—	—	—	—	—	—	—	—	—	—	—	—	—	—	—	2	1	1	8	12	24
Livingston	—	—	—	—	—	—	—	—	—	—	—	—	—	2	—	2	—	1	7	1	6	10	15	54
Marshall	—	—	—	—	—	—	—	—	—	—	—	—	—	—	—	—	—	—	—	—	—	—	2	2
McHenry	2	2	4	4	4	—	4	3	3	3	3	7	6	8	8	8	14	30	31	27	50	50	47	318
Ogle	—	—	—	2	—	—	1	—	4	2	3	1	2	6	2	3	10	7	2	9	21	46	50	171
Peoria	—	—	—	—	—	—	—	—	—	—	—	—	—	—	—	—	—	—	—	—	—	—	1	1
Putnam	—	—	—	—	—	—	—	—	—	—	—	—	—	—	—	—	—	—	—	—	—	—	2	2
Stephenson	—	—	—	—	—	1	—	1	1	2	3	4	6	10	11	12	8	26	8	34	38	52	23	240
Will	—	—	—	—	—	—	—	—	—	—	—	2	1	1	—	—	—	4	3	3	13	14	13	54
Winnebago	3	20	13	25	18	18	12	16	10	7	5	13	8	1	6	4	9	7	14	3	16	19	41	288
Total	14	51	31	51	42	38	30	37	42	36	36	59	71	72	75	51	90	176	163	218	369	459	539	2,750

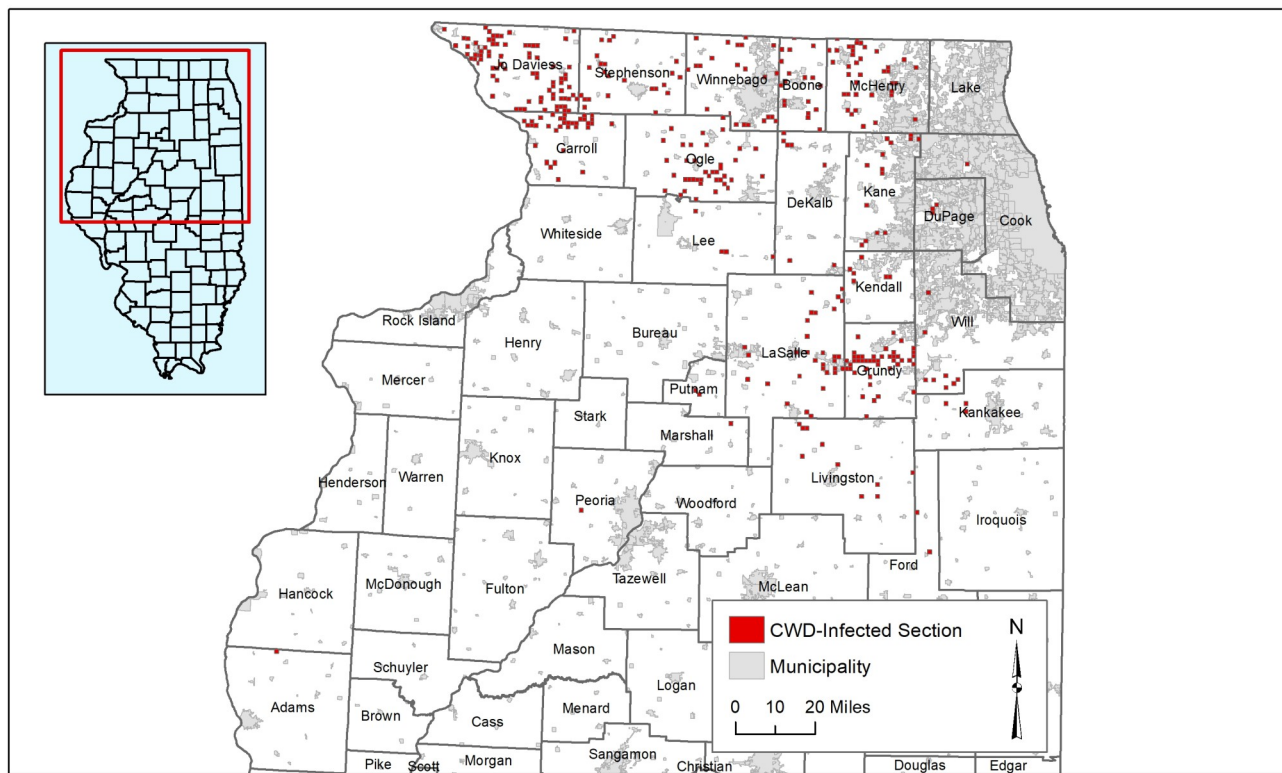


Figure 5. Distribution of CWD-positive deer identified across northern Illinois during FY2025 (1 July 2024 through 30 June 2025).

CWD Management During FY2025

Hunting Seasons for Herd/Disease Control

Length: Archery deer season (1 Oct 2024 -19 Jan 2025; closed during firearm season) consisted of 110 days in DuPage and Lake counties (no firearm hunting), and 103 days in all other CWD counties. Gun seasons totaled 20 days, consisting of the regular firearm season (7 days), youth season (3 days), muzzleloader season (3 days), and special CWD season (7 days). Gun deer seasons were not open in DuPage and Lake counties, except for Chain O' Lakes State Park (firearm season only) in Lake County.

Bag limits: Only two antlered deer could be taken per hunter during all seasons, except that during the special CWD season no antlered limit was in effect. There was no bag limit for antlerless deer.

Gun permit quotas: In counties with established CWD, permit quotas far exceeded demand, so that the number of permits was for all practical purposes unlimited. In counties with limited cases of CWD, permit quotas were more limited, so as not to significantly lower the entire county population. For the Special CWD season, hunters were allowed to purchase unlimited over-the-counter (OTC) permits, and could also use any unfilled deer tags from firearm, muzzleloader, or youth deer seasons.

Significant changes: None.

Hunter harvest: Hunters harvested 27,157 deer from 25 CWD counties during 2024-2025 (Table 2), compared to 25,844 deer during 2023-2024. The previous 5-year average harvest for the 25 counties was 25,675. In the 2001-2002 hunting season, the last season prior to the discovery of CWD in Illinois, hunter harvest totaled 28,524.

Table 2. Total deer harvested in CWD counties across northern Illinois, 1 October 2024 through 19 January 2025.

County	Youth	Muzzleloader	CWD	Firearm	Archery	All Seasons
Adams	147	87	0	2,299	1,394	3,927
Boone	6	0	40	128	207	381
Bureau	22	35	156	970	723	1,906
Carroll	39	37	0	810	812	1,698
Cook	<i>Not open to firearm deer hunting</i>				128	129
DeKalb	9	5	43	138	241	436
DuPage	<i>Not open to firearm deer hunting</i>				39	39
Ford	2	6	14	127	64	213
Grundy	8	8	92	314	331	753
JoDaviess	46	27	329	1,344	928	2,674
Kane	1	0	5	35	354	395
Kankakee	7	7	69	192	408	683
Kendall	2	1	26	70	218	317
Lake	<i>Not open to firearm deer hunting</i>			10	303	314
LaSalle	24	14	176	586	704	1,504
Lee	31	22	177	675	588	1,493
Livingston	13	8	64	431	292	808
Marshall	18	23	0	668	414	1,123
McHenry	5	8	77	236	851	1,177
Ogle	16	17	169	674	668	1,544
Peoria	36	24	0	857	954	1,871
Putnam	6	11	58	365	299	739
Stephenson	6	8	103	481	446	1,044
Will	7	13	74	218	720	1,032
Winnebago	11	12	88	307	539	957
Totals	462	373	1,760	11,935	12,625	27,157

¹ Only Chain O Lakes SP is open to firearm deer hunting in Lake County.

IDNR Sharpshooting Protocols

Rationale: Management using sharpshooting to supplement hunter harvest allows the Department to conduct localized, focused deer reductions in areas known to have CWD. Our goals are to 1) reduce disease transmission rates by lowering densities in infected areas, 2) reduce environmental contamination from infected deer, and 3) remove sick deer from the population at a higher rate than deer are becoming newly-infected. Advantages of sharpshooting include: (1) reductions are limited to areas with disease, so healthy populations in uninfected areas are not impacted as would be the case if hunting was the only management tool; (2) sharpshooting can be conducted on properties that do not normally allow hunting (or allow only very limited hunting), so management can occur in areas that normally serve as refuges to hunting; (3) focused sharpshooting has been shown to remove sick animals at a higher rate than hunting programs; and (4) sharpshooting can target specific high-risk deer social groups known to have CWD. Sharpshooting also provides detailed, localized surveillance information about disease distribution and prevalence rates within infected areas.

Timing: Following the close of deer hunting seasons in January, teams of IDNR staff that were trained/certified for sharpshooting began culling deer wintering in or around known CWD locations. All IDNR sharpshooting activities were conducted between 20 January 2025 and 27 March 2025.

Aerial Surveys: Deer were counted via helicopter survey during periods of suitable snow cover to determine distribution and population size within known CWD areas, enabling staff to focus sharpshooting activities on deer in winter concentration areas that included or were near CWD-infected properties.

Locations used for sharpshooting: Sharpshooting areas were generally limited to locations within a 2-section buffer zone around each known CWD-positive section (1 section = ~1 mile²). Sharpshooting was only conducted with the permission of the landowner.

Carcass handling/disposition: All animals (including fawns) providing suitable tissue samples were tested for CWD. Additional tissue samples were collected for genetic testing and evaluation of reproductive status at the University of Illinois

Champaign/Illinois Natural History Survey. Deer may be returned to the landowner at their request and results provided as soon as available. Remaining deer, in which CWD was not detected, were processed and donated to the Northern Illinois Food Bank.

Carcass handling/disposition: All animals (including fawns) providing suitable tissue samples were tested for CWD. Additional tissue samples were collected for genetic testing and evaluation of reproductive status at the University of Illinois Champaign/Illinois Natural History Survey. Deer may be returned to the landowner at their request and results provided as soon as available. Remaining deer, in which CWD was not detected, were processed and donated to the Northern Illinois Food Bank.

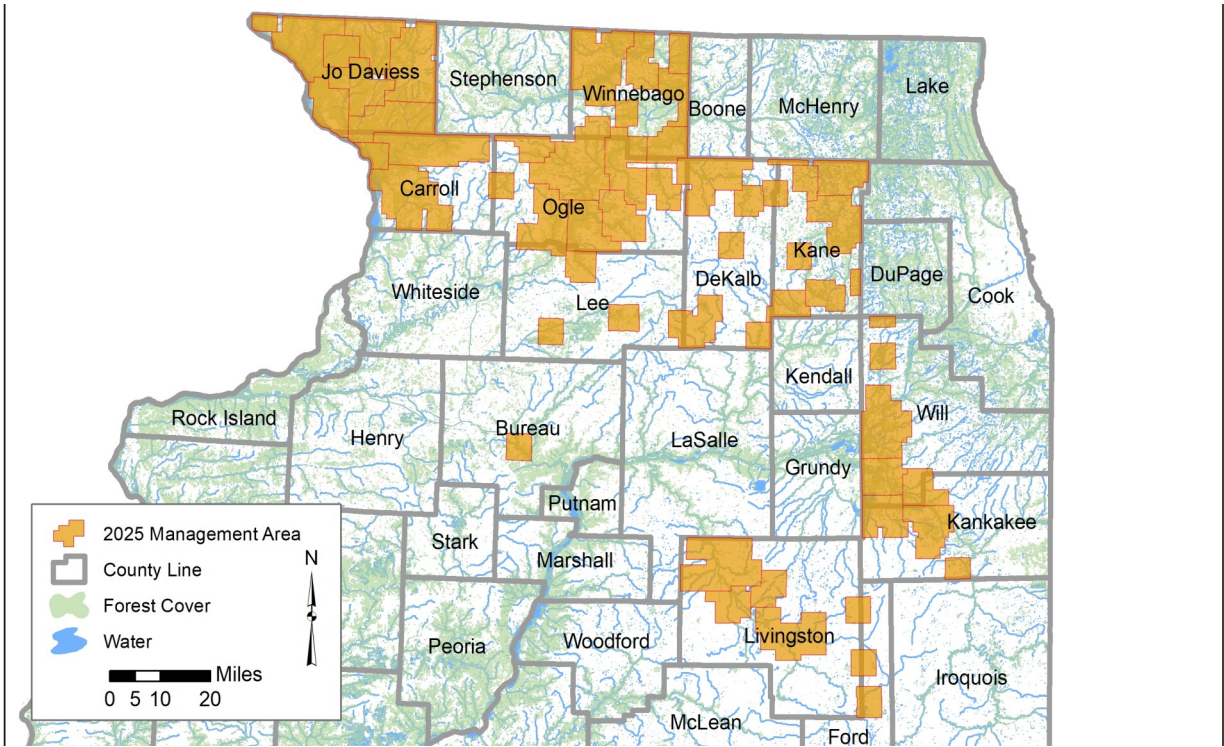


Figure 6. CWD management area boundaries across northern Illinois, winter 2025.

Table 3. Aerial deer survey estimates by county within CWD management units across northern Illinois, winter 2025.

County	Management Unit Total Area (mi ²)	Area of Deer Habitat in Management Unit (mi ²)	Total Deer Habitat Surveyed (mi ²)	Total # Deer Counted	Avg. # Deer per mi ² Deer Habitat Surveyed
Bureau	25.52	16.75	—	—	— ^A
Carroll	304.31	183.08	122.56	1,763	14.38
DeKalb	253.22	64.67	—	—	—
Ford	48.88	1.98	0.70	115	164.04
Jo Daviess	599.53	444.27	55.22	627	11.35
Kane	304.36	137.84	—	—	—
Kankakee	165.01	57.60	19.95	477	23.91
Lee	123.00	48.71	—	—	—
Livingston	364.21	72.72	11.84	450	38.00
Ogle	556.20	260.28	—	—	—
Will	250.33	124.27	8.27	123	14.86
Winnebago	381.02	202.62	—	—	—
Total	3,375.60	1,614.79	218.56	3,555	16.27

^A No flight conducted during winter 2025

Results of Helicopter Deer Counts

CWD management unit boundaries were established by buffering each CWD-positive section that occurred during the past five years (2019-2023) with a 2-section buffer (Figure 6). Total area encompassed by all CWD management areas has now expanded to ~20,036 square miles. Aerial deer surveys were conducted over ~13.5% of deer habitat present within current CWD management areas. Winter conditions were generally favorable, though limited personnel and temporal prioritization of management areas within the endemic area and newly detected counties limited surveys across most of northern Illinois. Highest deer densities were observed throughout east-central Illinois (Kankakee, Livingston counties) with lower deer densities (11-15 deer/mi²) noted in the northwestern (Carroll, Jo Daviess counties) region of the state (Table 3).

IDNR Sharpshooting Results

Management area: Sharpshooting was conducted within CWD management units created by buffering each CWD-positive section detected during the past five years (2020-2024) with a 2-section buffer (Figure 6). These units comprised 1,615 mi² of suitable deer habitat, of which 219 mi² was surveyed during winter 2025.

Number of counties in which deer were removed: 9

Number of townships in which deer were removed: 51

Number of sections in which deer were removed: 120 - Distribution of CWD-positive deer continues to occur primarily throughout the northern border counties of Carroll, Jo Daviess, Kane, Ogle, and Winnebago and in counties (e.g., Kankakee, Livingston, Will) along the Illinois River (Table 4, Figure 5).

Number of deer removed: 1,388 (mean # deer removed/section = 12.6; range = 1-67)

Number of CWD-positive deer removed: 76, of which 80% (n=61) occurred in 4 counties (Jo Daviess, Kane, Ogle, Winnebago; Table 4).

Carcass Disposition: 1,264 - donated to Northern Illinois Food Bank; 39 - returned to landowners; 9 - deemed unsafe for human consumption and landfilled; 1 sampled but carcass unavailable for processing; 75 - CWD-positive and venison cremated.

Table 4. IDNR sharpshooting effort and number of deer removed by county across northern Illinois, winter 2025.

	# of Townships Where Removals Occurred	# of Sections Where Removals Occurred	Total # of Deer Removed	Average # of Deer Removed per Section	# of Positive Deer Removed
Bureau	1	2	50	25.0	0
Carroll	5	12	164	13.7	6
DeKalb	3	4	35	8.8	2
Jo Daviess	8	26	351	13.5	23
Kane	10	25	192	7.7	10
Kankakee	4	5	53	10.6	2
Lee	2	5	26	5.2	1
Livingston	5	5	82	16.4	0
Ogle	5	16	156	9.8	16
Will	4	11	132	12.0	4
Winnebago	4	9	147	16.3	12
All Counties	51	120	1,388	12.6	76

Sharpshooting Programs by Other Agencies/Entities in CWD counties

Deer Population Control Permits (DPCP): Seven land-managing entities with DPCPs collected CWD samples as a condition of their permit. Sampling occurred in 7 CWD counties (Cook, DuPage, Jo Daviess, Kane, Lake, Will and Winnebago) as well as Cook and DuPage counties, which are bordered by 5 CWD counties. Permit recipients submitted tissue samples for CWD testing from 1,255 deer (1,247 usable samples) taken from 117 sections in those counties. Twenty-two CWD-positive deer were removed from counties where the disease has previously been detected: 1 from Cook County, 3 from DuPage County, 2 from Jo Daviess County, 2 from Will County, and 14 from Winnebago County.

Nuisance Deer Removal Permits (DRP): Seventy-seven samples were submitted from deer taken in 9 counties (including 4 CWD counties) using DRPs, all of which tested negative for CWD.

Discussion: Illinois CWD in FY2025

Five hundred thirty-nine (539) CWD-positive deer were identified from 12,444 usable deer samples collected statewide. Disease prevalence across the 25-county CWD endemic area (9.2% excluding Peoria County) has increased significantly over time (Figure 7) and constitutes the highest observed infection rate in the history of the program. Not surprisingly, CWD prevalence of infection reported for adult males (10.8%) continues to be notably (~34%) higher than that of adult females (7.1%; Figure 7). Current disease prevalence does not reflect the diversity of disease conditions as CWD is not randomly distributed across the landscape (Table 5, Figures 8,9), but is influenced by habitat availability, deer density, spatial proximity to established disease areas, localized management actions, deer movement, length of time since local disease introduction, and other factors. The current disease outbreak area consists of a central core area of increasing disease prevalence throughout northern border counties (Boone, Jo Daviess, McHenry, Stephenson, Winnebago) continuing south into east-central counties (Grundy, Kendall, LaSalle, Livingston) and surrounded by disease foci that extend across agricultural landscapes more than 100 miles to the south and west (Appendices A-C). Several of these disease foci are of recent origin and to date, few positive deer have been detected. However, and without active and ongoing disease management, CWD will inevitably become established in these areas with subsequent increases in prevalence rates over time. Disease foci in newly detected counties (Marshall, Peoria, Putnam) likely reflect movement of infected deer from existing focal counties along the Illinois River that serve as reservoirs for further geographic disease spread. However, disease foci far removed from the core area (Adams County; Figure 1, Table 1) highlights the need to preserve the health of local deer herds and minimize movement of CWD into currently unaffected regions of the state using active management techniques, particularly sharpshooting and hunter harvest as these methods were most effective for managing CWD across northern Illinois during FY2025. Increasing trends in prevalence of infection and occurrence of new disease foci throughout the northern and west-central regions of the state during the past 5 years confirms the ongoing need for integrative adaptive management approaches to mitigate potential disease impacts on deer populations throughout Illinois in future years.

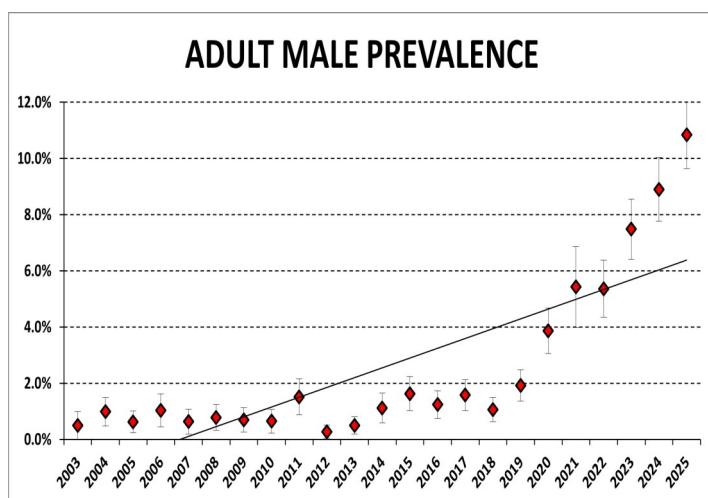
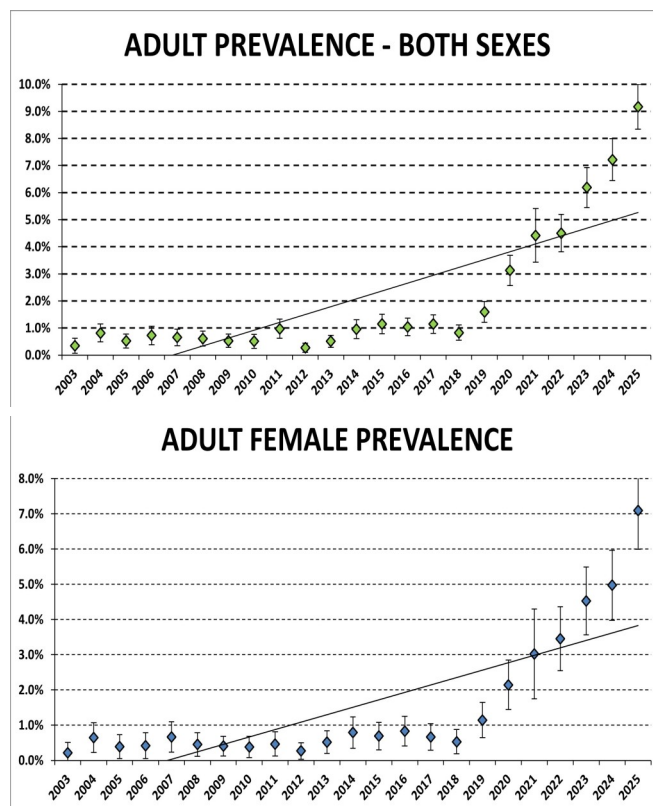
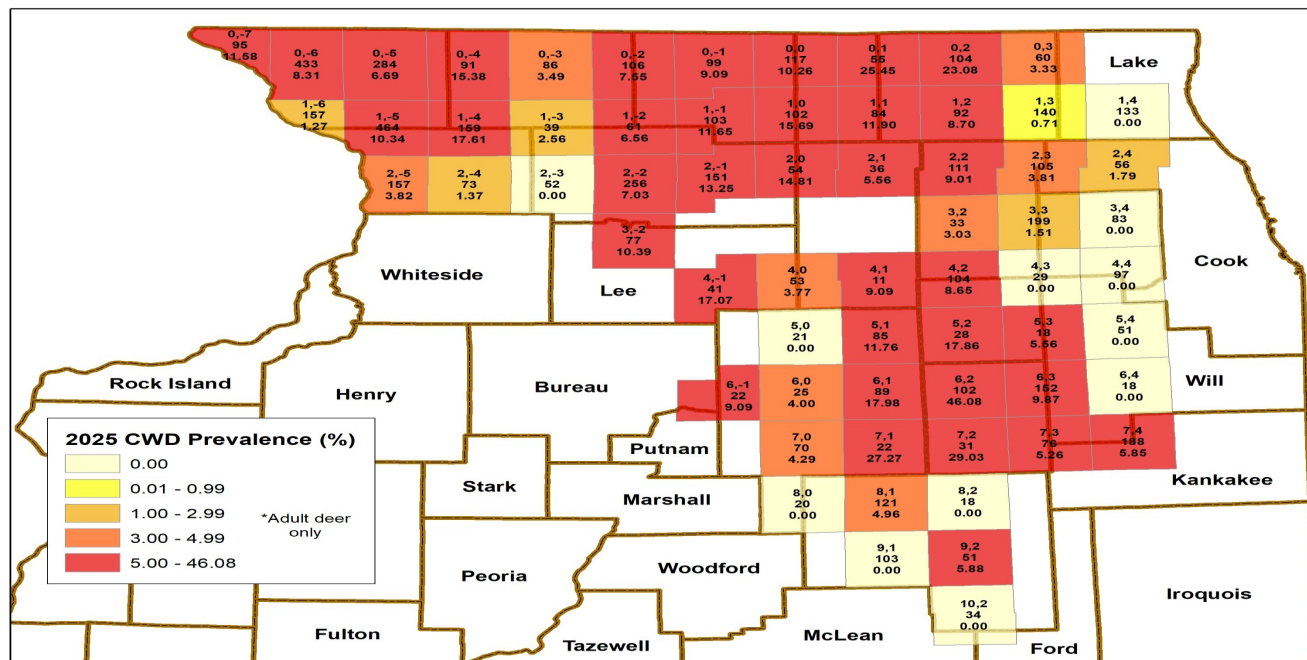


Figure 7. Trends in CWD prevalence for hunter-harvested adult deer (≥ yearling) during 2003-2025 for the 25 counties where CWD has been detected. Error bars at each point depict the 95% confidence interval of annual point estimates. Mean prevalence rates in males remain ~77% higher than in females during this 23-year period.





*Blocks only shown with a minimum of 10 useable samples.

Figure 8. Estimated prevalence rates in adult (≥ 1.5 yr old) deer during FY2025 per 4-township block. For each block, the upper number is the grid coordinate; the middle number is the sample size; and the lower number is the estimated adult prevalence rate (%) calculated using all data sources except suspect deer.

Table 5. Prevalence of infection for CWD-positive hunter harvested adult (>1.5 yrs old) deer tested during FY2025 (1 July 2024 through 30 June 2025).

County	# of Samples	# of Positives	% Positive	95% CI (\pm)
Adams	132	1	0.76	1.48
Boone	99	21	21.21	8.05
Bureau	74	0	0.00	0.00
Carroll	403	36	8.93	2.78
Cook	16	0	0.00	0.00
DeKalb	112	9	8.04	5.03
DuPage	12	0	0.00	0.00
Ford	10	1	10.00	18.59
Grundy	217	71	32.72	6.24
JoDaviess	913	84	9.20	1.87
Kane	160	10	6.25	3.75
Kankakee	107	1	0.93	1.82
Kendall	84	8	9.52	6.28
Lake	40	0	0.00	0.00
LaSalle	353	39	11.05	3.27
Lee	76	10	13.16	7.60
Livingston	298	10	3.36	2.04
Marshall	24	2	8.33	11.06
McHenry	437	45	10.30	2.85
Ogle	447	34	7.61	2.46
Peoria	9	0	0.00	0.00
Putnam	32	2	6.25	8.39
Stephenson	266	22	8.27	3.31
Will	172	6	3.49	2.74
Winnebago	166	15	9.04	4.36
All CWD Counties	4,659	427	9.17	0.83

Annual surveillance data revealed increasing trends in prevalence rates throughout the CWD infection area, though patterns of infection varied spatially across the endemic area during FY2025 (Table 5, Figures 8, 9):

- As in past years, a greater number of CWD-positive hunter-harvested deer were removed from Jo Daviess ($n=84$) County than any other county, followed by 7 counties (Boone, Carroll, Grundy, LaSalle, McHenry, Ogle, Stephenson) where ≥ 20 CWD+ deer were harvested; ≥ 5 CWD+ deer were harvested from 15 of 25 counties in FY2025 (Table 5).
- County prevalence rates along the Winnebago-Boone county line (i.e., CWD epicenter; blocks 0,0; 1,0; Figure 8) have remained relatively consistent over time, though has increased progressively during the past several years (Figure 9). Elevated infection rates at the county level in recent years mirrors similar trends in the number of CWD-positive deer removed annually, which has increased substantially since 2023 (Table 1). This may be due at least in part to the combined effects of stable deer populations, increased surveillance testing in recent years, or spillover effects of CWD-infected deer/ progressive environmental accumulation of prions along the Illinois-Wisconsin border. Most disturbing about long-term trends in CWD dynamics across northern Illinois is the rapid increase in disease prevalence over the past 5 years. Prior to 2019, prevalence remained relatively low ($<5\%$) for 10 counties, but by 2020 ranged from 6-33% in 16 counties (Table 5, Figure 9). In short, we have been unable to maintain low CWD prevalence or prevent disease spread into new areas in recent years. While past management efforts may have slowed disease spread, they have clearly not prevented it over the past 5 years.
- Northwestern Illinois (i.e., Jo Daviess, Ogle, Stephenson, northern Carroll counties) remains a concern given increasing disease prevalence in relatively high density deer populations throughout the region, particularly along the Illinois/Wisconsin state border. Combined prevalence for Carroll, Jo Daviess, Ogle, and Stephenson counties was 8.2% in FY2025 (224 CWD +, 2748 samples) and $\sim 28\%$ and 67% higher than the combined prevalence in FY2024 (181 CWD+, 2843 samples, 6.4%) and FY2023 (132 CWD+, 2683 samples, 4.9% prevalence), respectively. Disease prevalence rates in recent years (FY2023-, FY2025) are 32-204% higher than the combined prevalence in FY2022 (3.7%), FY2021 (2.9%), or FY2020 (2.7%), which are likely attributable to higher rates of direct and indirect rates of disease transmission among local deer populations throughout northwestern Illinois. Northern Stephenson and Carroll counties (blocks 0,-4; 1,-4 and 1,-5) had a combined prevalence of 12.6% in FY2025 (90 CWD+, 714 samples), which was 43% and 50% higher than infection rates in FY2024 (72 CWD+, 822 samples, 8.8% prevalence) and FY2023 (8.6%, 61 CWD+, 722 samples, 8.4% prevalence), respectively; infection rates have increased exponentially (i.e., 56-404%) since FY2018. Of greater concern are rapidly increasing prevalence rates reported in Lee and Ogle counties (blocks 2,-1; 2,-2; 3,-2; 4,-1), which have increased ~ 5.3 -fold from 1.9% in FY2022 to 10.1% in FY2025.
- Northeastern Illinois (Grundy, Kendall, LaSalle, McHenry counties) is characterized by habitat characteristics that aid in seasonal movements and long-distance dispersal movements by deer. Consequently, minimizing geographic spread of infected animals to adjacent counties where CWD has not currently been detected is an ongoing challenge for wildlife managers. CWD prevalence rates across northern McHenry County (blocks 0,1; 0,2; Figure 8) has consistently exhibited among the highest local prevalence rates in Illinois in recent years, with a rate of 23.9% in FY2025. This was exceeded only by an area in LaSalle and Grundy counties (32.0%; blocks 6,1; 6,2; 7,1; 7,2; Figure 8) where deer densities remain high and progressive geographic expansion across these counties or to newly emerging (i.e., Ford)/ uninfected adjacent counties are likely, despite ongoing implementation of contemporary disease management strategies. This will also be the case in northeastern Kane County and parts of Kendall County, where larger blocks of deer habitat are in public ownership (county, township, etc.) and closed to hunting. Further, long-distance movements of deer are common in Illinois' fragmented agricultural landscapes. These movements, particularly dispersal by yearling deer, introduce CWD into new areas followed by rapid establishment of the CWD and increasing prevalence in local deer populations if new disease foci are not promptly identified and addressed through management action. Among our largest obstacles to overcome in ongoing CWD management are inadequate surveillance to rapidly detect new disease foci, limited personnel to meet management goals in the face of geographic disease expansion, and inadequate numbers of cooperators for access to properties in areas of high disease prevalence.
- Surveillance resulted in identification of positive deer (6) in four new counties during FY2025: two adult male deer taken by firearm hunters in Putnam County in November and December 2024, two adult male deer taken by firearm hunters in Marshall County in December 2024, an adult male deer taken by a firearm hunter in Adams County in November 2024, and an adult male deer showing clinical signs of disease infection in Peoria County in February 2025. With the exception of the suspect deer from Peoria County, all new positives were identified through IDNRs meat locker surveillance program. Since meat locker collected samples are typically submitted by cooperators after close of hunting seasons, test results were not available in time for follow-up surveillance sampling to occur during winter 2024-2025. Nevertheless, targeted surveillance sampling throughout these counties will occur during the 2025-2026 annual deer season.

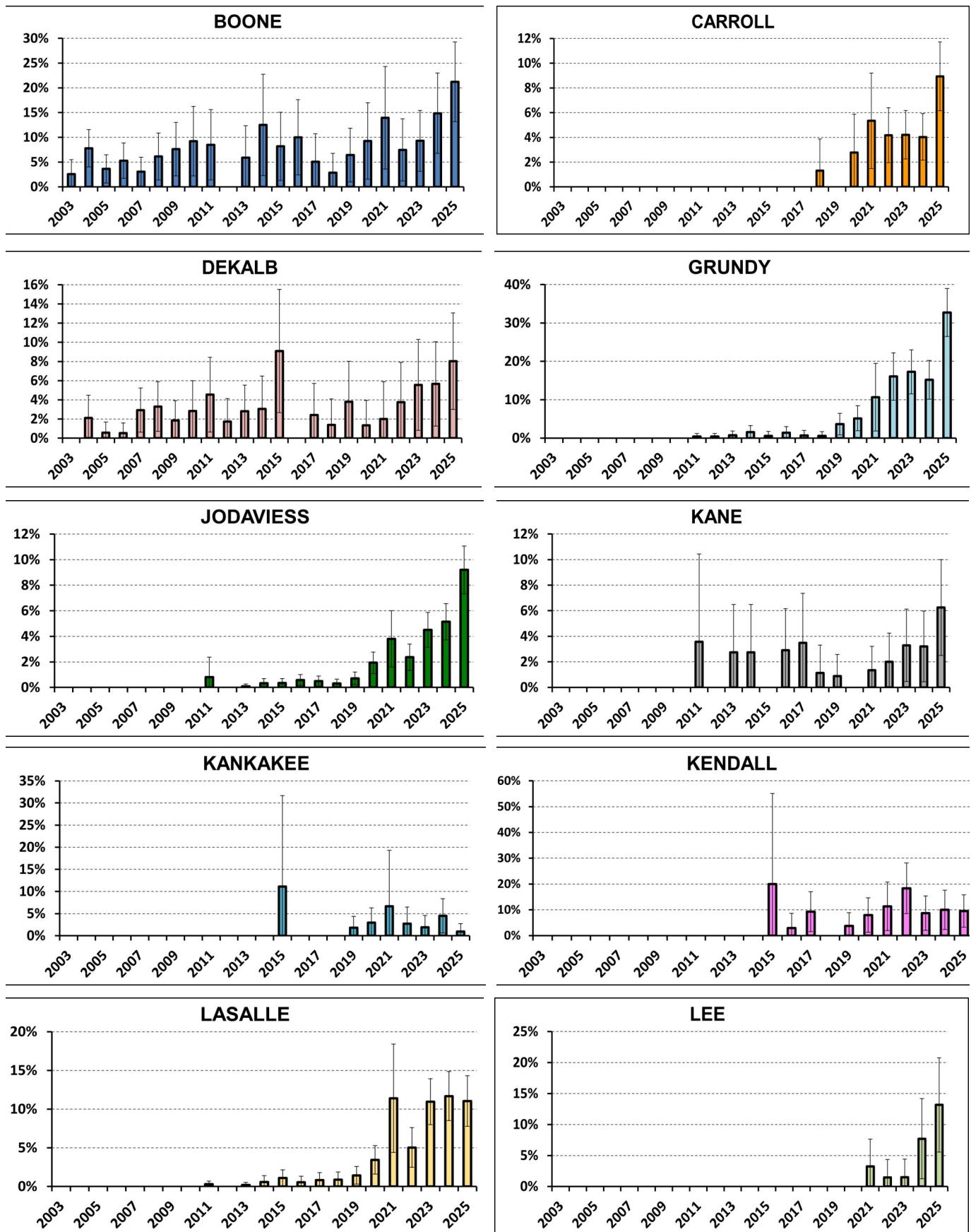


Figure 9. Patterns in estimated CWD prevalence rates in counties with ≥ 5 years of data. County prevalence rates were calculated using only hunter-harvested adult male and female deer.

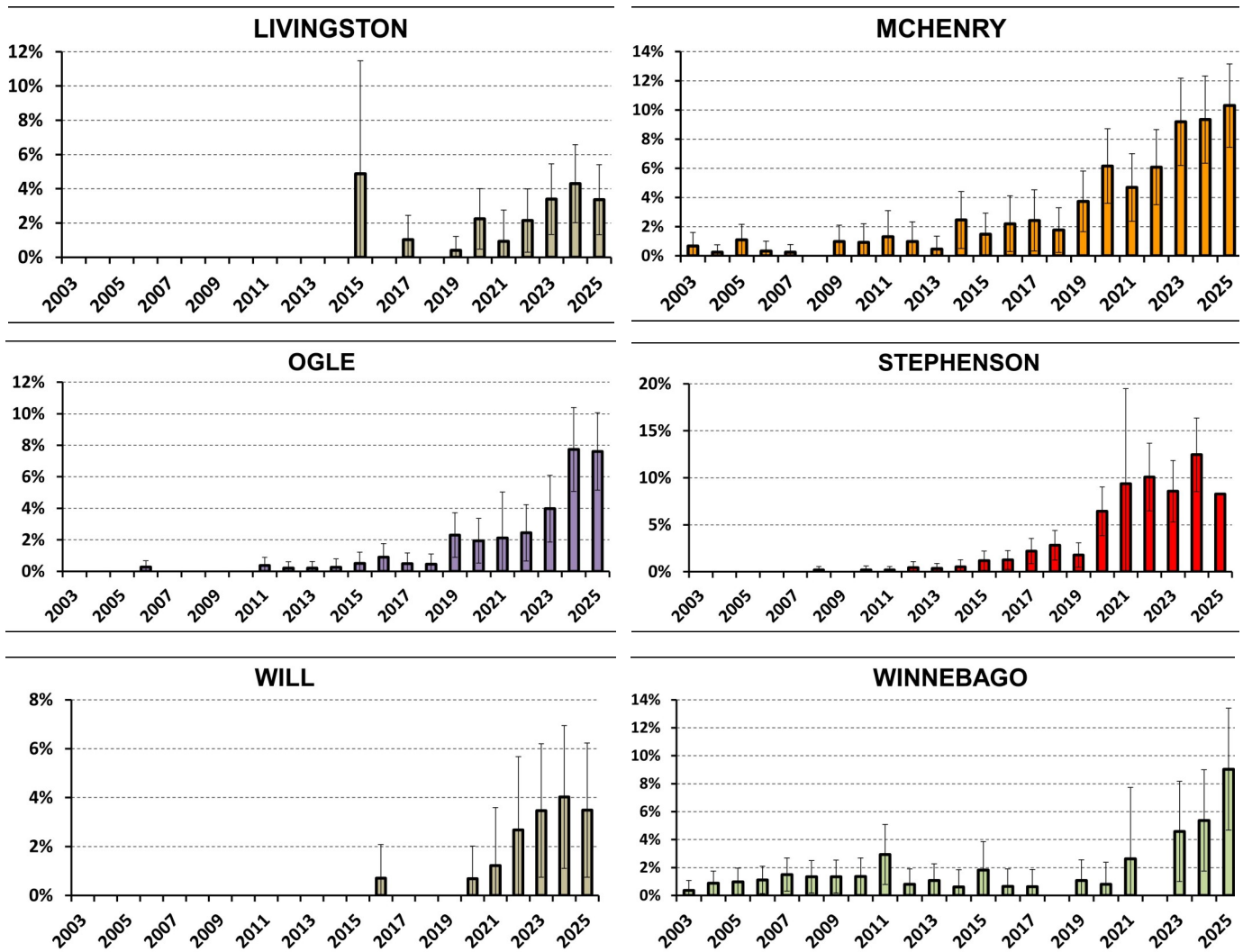


Figure 9. Continued.

IDNR must continue to evaluate the efficacy of sustainable CWD management throughout the endemic area and newly emerging counties of northern Illinois over the next several years, after which quantitative analyses of data derived during the Pilot project will inform whether current management techniques are warranted or should be limited to increased surveillance coupled with expansion of hunter testing across the state. In the interim, IDNR will continue its outreach campaign to educate Illinoisans about the potential negative impacts of CWD on the deer herd. Since CWD does not cause rapid and dramatic die-offs such as those associated with hemorrhagic disease (EHD and bluetongue), public concern for the progressive expansion of the disease across northern counties has waxed and waned since the early days of the Illinois outbreak (2002). Consequently, there are hunters that are more concerned about the IDNR's possible impacts on current deer abundance from managing the disease through targeted herd reductions than they are concerned about the disease itself. Common arguments from hunters are that CWD does not significantly impact deer populations, that management is unnecessary and doesn't work, and that the disease "has always been here." As such, proponents of those arguments advocate for maintaining high deer densities, higher hunter success rates, and older age structure in adult (trophy) bucks. These conditions contrast with current CWD management goals and are most conducive to increasing disease prevalence rates that limits future spread of CWD throughout the state where the disease occurs, reduces deer hunting opportunities, and threatens the long-term health of the deer population.

Appendix A. Useable CWD samples from white-tailed deer by county in Illinois taken during the 2024-2025 sampling season. Numbers in parentheses reflect the number of CWD-positive deer identified.

County	Check Stations	Drop-off Stations/ Meat Processors	Agency Culling	Special Permits ¹	Roadkill/ Incidental	Suspect	Total
ADAMS		132 (1)					132 (1)
ALEXANDER		1					1
BOND		66					66
BOONE	52 (15)	53 (7)			1 (1)	2 (2)	107 (24)
BROWN		45				1	46
BUREAU	3	71	50		10		134
CALHOUN		62					62
CARROLL	329 (26)	75 (10)	164 (6)				568 (42)
CASS		15					15
CHAMPAIGN		7			2	1	10
CHRISTIAN		29					29
CLARK		303					303
CLAY		173					173
CLINTON		8			1		9
COLES		147				2	149
COOK		16		490 (1)	1	1	508 (1)
CRAWFORD		86					86
CUMBERLAND		59					59
DEKALB	58 (5)	55 (4)	35 (2)		1	1	150 (11)
DEWITT		13					13
DOUGLAS		14					14
DUPAGE		12		327 (3)	3		342 (3)
EDGAR		89					89
EDWARDS		5					5
EFFINGHAM		50					50
FAYETTE	1	82			2		85
FORD		11 (1)			1 (1)		12 (2)
FRANKLIN	1	65					66
FULTON		21					21
GALLATIN		61					61
GREENE		49					49
GRUNDY	163 (47)	54 (24)			4 (1)	3 (2)	224 (74)
HAMILTON		27					27
HANCOCK		148					148
HARDIN		32					32
HENDERSON		48					48
HENRY		43			1		44
IROQUOIS		18					18
JACKSON		57					57
JASPER		38					38
JEFFERSON		254					254
JERSEY		39					39
JODAVIESS	735 (66)	185 (18)	350 (23)	26 (2)	5		1,301 (109)
JOHNSON		91		9	1		101

Appendix A. Continued.

County	Check Stations	Drop-off Stations/ Meat Processors	Agency Culling	Special Permits ¹	Roadkill/ Incidental	Suspect	Total
KANE	9	155 (10)	192 (10)	46	3	1 (1)	406 (21)
KANKAKEE	96	12 (1)	53 (2)		1		161 (3)
KENDALL	40 (2)	45 (6)			1		86 (8)
KNOX		126					126
LAKE	3	41		152	1		197
LASALLE	294 (30)	59 (9)			9	1	363 (39)
LAWRENCE		6					6
LEE	7 (1)	71 (9)	26 (1)	13	1	5 (1)	123 (12)
LIVINGSTON	254 (8)	48 (2)	82		1		385 (10)
LOGAN		6				1	7
MACON		15					15
MACOUPIN		74					74
MADISON		81			1		82
MARION		57					57
MARSHALL		24 (2)		1	2	1	28 (2)
MASON		4					4
MASSAC		81				1	82
MCDONOUGH		157					157
MCHENRY	148 (20)	297 (25)		5	2	3 (2)	455 (47)
MCLEAN		39		6	1	1	47
MENARD		8					8
MERCER		16		4			20
MONROE		3					3
MONTGOMERY		224			2		226
MORGAN	1	13					14
MOULTRIE		16					16
OGLE	372 (31)	76 (3)	155 (16)		1	1	605 (50)
PEORIA		9				2 (1)	11 (1)
PERRY		324					324
PIATT		39					39
PIKE		644			1	1	646
POPE		71					71
PULASKI		9					9
PUTNAM		32 (2)			3	1	36 (2)
RANDOLPH	1	12		28			41
RICHLAND		17					17
ROCKISLAND		6					6
SALINE		91					91
SANGAMON		4				1	5
SCHUYLER		40					40
SCOTT		18					18
SHELBY		52			1		53
STARK		7					7
STCLAIR		6				1	7
STEPHENSON	257 (22)	9			7	1	274 (23)
TAZEWELL		10			7 (1)		10

Appendix A. Continued.

County	Check Stations	Drop-off Stations/ Meat Processors	Agency Culling	Special Permits¹	Roadkill/ Incidental	Suspect	Total
UNION		25					25
VERMILION		1				1	2
WABASH							
WARREN		32					32
WASHINGTON		5					5
WAYNE		81					81
WHITE		19					19
WHITESIDE		3					3
WILL	114 (6)	58	132 (4)	135 (2)	4 (1)		443 (13)
WILLIAMSON		166					166
WINNEBAGO	141 (14)	26 (1)	146 (12)	96 (14)	4	3	416 (41)
WOODFORD		21		7			28
TOTALS	3,079 (293)	6,500 (135)	1,385 (76)	1,345 (22)	79 (5)	37 (9)	12,423 (539)

Appendix B. Summary of CWD-positive deer collected throughout northern Illinois during FY2025 (1 July 2024 through 30 June 2025).

Date Collected	County	Township, Range, Section	Sex	Age (yrs)	Collection Method
1-Aug-24	GRUNDY	333N 8E12	M	2	ROADKILL
11-Sep-24	MCHENRY	346N 6E 9	M	2	SUSPECT
23-Sep-24	BOONE	345N 3E32	M	1	SHARPSHOOTING
3-Oct-24	MCHENRY	345N 7E36	M	5	HUNTING
3-Oct-24	MCHENRY	346N 6E15	M	1	HUNTING
4-Oct-24	JODAVIESS	426N 5E18	F	2	HUNTING
4-Oct-24	MCHENRY	343N 5E 1	F	3	HUNTING
7-Oct-24	MCHENRY	346N 6E 5	F	2	HUNTING
8-Oct-24	CARROLL	425N 6E 7	F	3	HUNTING
8-Oct-24	CARROLL	425N 5E11	F	3	HUNTING
8-Oct-24	CARROLL	425N 6E18	F	2	HUNTING
8-Oct-24	CARROLL	425N 6E 6	F	2	HUNTING
8-Oct-24	CARROLL	425N 5E13	F	2	HUNTING
10-Oct-24	MCHENRY	344N 5E14	M	2	HUNTING
11-Oct-24	MCHENRY	343N 7E19	M	2	HUNTING
11-Oct-24	GRUNDY		M	3	HUNTING
12-Oct-24	MCHENRY	345N 7E35	F	2	HUNTING
14-Oct-24	MCHENRY	345N 7E10	F	2	HUNTING
14-Oct-24	MCHENRY	345N 6E21	M	2	HUNTING
15-Oct-24	CARROLL	425N 6E18	F	4	HUNTING
15-Oct-24	KENDALL	336N 7E 1	F	1	HUNTING
15-Oct-24	KANKAKEE	331N11E18	F	3	HUNTING
15-Oct-24	CARROLL	425N 6E 7	F	2	HUNTING
15-Oct-24	KENDALL	336N 6E 9	F	1	HUNTING
15-Oct-24	CARROLL	425N 3E17	M	5	HUNTING
16-Oct-24	OGLE	423N10E21	M	1	HUNTING
16-Oct-24	DEKALB	342N 3E22	F	2	HUNTING
17-Oct-24	JODAVIESS	428N 1W27	M	A	HUNTING
19-Oct-24	MCHENRY	343N 6E27	M	2	HUNTING
20-Oct-24	BOONE	343N 4E 3	M	1	HUNTING
21-Oct-24	BOONE	344N 4E29	M	1	HUNTING
21-Oct-24	JODAVIESS	427N 3E23	M	5	HUNTING
21-Oct-24	MCHENRY	346N 6E 8	M	3	HUNTING
23-Oct-24	MCHENRY	345N 7E16	M	2	HUNTING
24-Oct-24	GRUNDY	333N 6E22	F	2	HUNTING
25-Oct-24	KANE	342N 7E14	F	1	HUNTING
28-Oct-24	LEE	420N11E24	F	2	HUNTING
28-Oct-24	MCHENRY	346N 5E21	F	1	HUNTING
29-Oct-24	LASALLE	332N 4E 7	M	5	HUNTING
29-Oct-24	BOONE	344N 3E32	M	A	HUNTING
30-Oct-24	LASALLE	333N 5E36	M	5	HUNTING
30-Oct-24	MCHENRY	345N 6E21	M	1	HUNTING
1-Nov-24	KENDALL	337N 6E33	F	2	HUNTING
3-Nov-24	GRUNDY	333N 8E27	M	2	HUNTING
4-Nov-24	GRUNDY	331N 6E 2	M	4	HUNTING

Appendix B. Continued.

Date Collected	County	Township, Range, Section	Sex	Age (yrs)	Collection Method
4-Nov-24	KENDALL	336N 6E 9	M	4	HUNTING
4-Nov-24	JODAVIESS	426N 2E36	M	2	HUNTING
4-Nov-24	JODAVIESS	428N 3E 9	M	3	HUNTING
5-Nov-24	MCHENRY	345N 8E11	M	2	HUNTING
6-Nov-24	KENDALL	336N 7E 2	M	3	HUNTING
7-Nov-24	ADAMS	4 2N 8W 1	M	2	HUNTING
7-Nov-24	GRUNDY	333N 6E24	M	4	HUNTING
7-Nov-24	LEE	420N11E24	F	3	HUNTING
7-Nov-24	LASALLE	333N 5E14	M	3	HUNTING
8-Nov-24	WINNEBAGO	29N 1E 8	M	2	HUNTING
8-Nov-24	KANE	338N 6E26	M	3	HUNTING
8-Nov-24	KANE	342N 8E10	M	2	HUNTING
8-Nov-24	GRUNDY	333N 6E 2	M	3	HUNTING
10-Nov-24	GRUNDY	333N 8E29	M	5	HUNTING
12-Nov-24	LEE	422N10E34	M	3	HUNTING
13-Nov-24	KANE	339N 6E 1	M	4	HUNTING
13-Nov-24	CARROLL	425N 5E 2	F	2	HUNTING
13-Nov-24	FORD	327N 9E31	M	2	ROADKILL
13-Nov-24	MCHENRY	345N 5E 5	M	1	HUNTING
15-Nov-24	KANE	342N 8E 3	M	3	HUNTING
15-Nov-24	DEKALB		M	5	HUNTING
15-Nov-24	LEE	420N11E24	M	4	HUNTING
16-Nov-24	KANE	338N 6E26	M	3	HUNTING
16-Nov-24	JODAVIESS	426N 1E13	M	2	HUNTING
17-Nov-24	MCHENRY	344N 5E13	F	2	HUNTING
17-Nov-24	KENDALL	336N 7E 1	M	2	HUNTING
17-Nov-24	MCHENRY	346N 7E19	M	2	HUNTING
18-Nov-24	GRUNDY	333N 7E15	M	2	HUNTING
18-Nov-24	GRUNDY	333N 6E 9	M	4	HUNTING
18-Nov-24	PUTNAM	332N 2W35	M	3	HUNTING
19-Nov-24	KANE	342N 7E33	M	3	HUNTING
19-Nov-24	BOONE	344N 3E29	M	1	HUNTING
19-Nov-24	BOONE	344N 3E29	M	1	HUNTING
19-Nov-24	FORD	325N 9E15	M	2	HUNTING
20-Nov-24	OGLE	424N10E 8	M	3	HUNTING
21-Nov-24	JODAVIESS	427N 2E 5	M	5	HUNTING
21-Nov-24	DEKALB	337N 5E22	M	4	HUNTING
21-Nov-24	LASALLE	333N 5E34	M	3	HUNTING
22-Nov-24	OGLE	425N11E 3	M	2	HUNTING
22-Nov-24	JODAVIESS	427N 2E 9	M	2	HUNTING
22-Nov-24	JODAVIESS	428N 1E 2	M	2	HUNTING
22-Nov-24	JODAVIESS	428N 3E 8	M	2	HUNTING
22-Nov-24	JODAVIESS	427N 4E13	M	2	HUNTING
22-Nov-24	BOONE	346N 3E21	F	2	HUNTING
22-Nov-24	BOONE	343N 4E17	M	4	HUNTING
22-Nov-24	BOONE	343N 4E35	M	1	HUNTING

Appendix B. Continued.

Date Collected	County	Township, Range, Section	Sex	Age (yrs)	Collection Method
22-Nov-24	STEPHENSON	426N 5E14	M	4	HUNTING
22-Nov-24	OGLE	423N11E18	M	3	HUNTING
22-Nov-24	JODAVIESS	426N 4E14	M	2	HUNTING
22-Nov-24	OGLE	424N10E12	M	2	HUNTING
22-Nov-24	JODAVIESS	428N 1E17	M	2	HUNTING
22-Nov-24	OGLE	341N 2E33	M	2	HUNTING
22-Nov-24	OGLE	422N10E 6	M	1	HUNTING
22-Nov-24	OGLE	340N 1E 6	F	2	HUNTING
22-Nov-24	OGLE	423N11E 9	M	3	HUNTING
22-Nov-24	OGLE	423N10E26	M	2	HUNTING
22-Nov-24	JODAVIESS	428N 1W15	M	3	HUNTING
22-Nov-24	JODAVIESS	426N 4E25	F	4	HUNTING
22-Nov-24	JODAVIESS	429N 5E20	F	2	HUNTING
22-Nov-24	JODAVIESS	427N 4E23	M	2	HUNTING
22-Nov-24	STEPHENSON	429N 6E35	M	2	HUNTING
22-Nov-24	CARROLL	423N 4E 5	M	2	HUNTING
22-Nov-24	STEPHENSON	428N 9E27	M	1	HUNTING
22-Nov-24	STEPHENSON	428N 6E33	M	3	HUNTING
22-Nov-24	JODAVIESS	428N 1W36	M	3	HUNTING
22-Nov-24	JODAVIESS	428N 1E33	M	2	HUNTING
22-Nov-24	WINNEBAGO	343N 1E29	M	1	HUNTING
22-Nov-24	JODAVIESS	428N 1E23	M	3	HUNTING
22-Nov-24	JODAVIESS	426N 3E24	M	3	HUNTING
22-Nov-24	JODAVIESS	428N 3E11	M	2	HUNTING
22-Nov-24	JODAVIESS	428N 1W 4	M	2	HUNTING
22-Nov-24	JODAVIESS	427N 3E14	M	2	HUNTING
22-Nov-24	OGLE	422N 9E12	M	2	HUNTING
22-Nov-24	JODAVIESS	428N 3E28	M	2	HUNTING
22-Nov-24	STEPHENSON	426N 6E11	F	2	HUNTING
22-Nov-24	LASALLE	332N 1E13	F	5	HUNTING
22-Nov-24	OGLE	424N 9E32	F	2	HUNTING
22-Nov-24	CARROLL	425N 3E23	M	3	HUNTING
22-Nov-24	LIVINGSTON	330N 4E17	M	3	HUNTING
22-Nov-24	LIVINGSTON	330N 4E 7	F	3	HUNTING
22-Nov-24	LIVINGSTON	329N 5E35	M	1	HUNTING
22-Nov-24	LIVINGSTON	327N 7E 9	F	1	HUNTING
22-Nov-24	LIVINGSTON	328N 7E28	F	4	HUNTING
22-Nov-24	LASALLE	335N 5E 1	F	5	HUNTING
22-Nov-24	CARROLL	425N 6E18	M	4	HUNTING
22-Nov-24	GRUNDY	333N 7E28	M	3	HUNTING
22-Nov-24	LASALLE	332N 2E23	M	2	HUNTING
22-Nov-24	LASALLE	332N 5E30	F	3	HUNTING
22-Nov-24	JODAVIESS	429N 4E36	M	1	HUNTING
22-Nov-24	LASALLE	332N 2E23	M	2	HUNTING
22-Nov-24	JODAVIESS	426N 4E34	F	4	HUNTING
22-Nov-24	CARROLL	425N 4E12	F	5	HUNTING

Appendix B. Continued.

Date Collected	County	Township, Range, Section	Sex	Age (yrs)	Collection Method
22-Nov-24	CARROLL	425N 5E19	M	1	HUNTING
22-Nov-24	CARROLL	425N 5E18	M	3	HUNTING
22-Nov-24	CARROLL	425N 5E17	M	2	HUNTING
22-Nov-24	GRUNDY	332N 8E36	F	2	HUNTING
22-Nov-24	CARROLL	424N 4E24	F	3	HUNTING
22-Nov-24	STEPHENSON	426N 5E13	F	3	HUNTING
22-Nov-24	LASALLE	335N 5E15	M	1	HUNTING
22-Nov-24	MCHENRY	346N 8E32	M	1	HUNTING
22-Nov-24	DEKALB	341N 5E18	M	3	HUNTING
22-Nov-24	STEPHENSON	427N 5E 1	F	2	HUNTING
22-Nov-24	LASALLE	333N 5E22	M	3	HUNTING
22-Nov-24	LEE	337N 2E12	F	5	HUNTING
22-Nov-24	LASALLE	333N 5E22	M	2	HUNTING
22-Nov-24	OGLE	423N11E 3	M	3	HUNTING
22-Nov-24	GRUNDY	333N 7E20	M	2	HUNTING
22-Nov-24	LASALLE	333N 5E15	F	3	HUNTING
22-Nov-24	GRUNDY	333N 7E 2	M	3	HUNTING
22-Nov-24	GRUNDY	333N 6E15	M	1	HUNTING
22-Nov-24	LASALLE	332N 5E 3	M	2	HUNTING
22-Nov-24	GRUNDY	333N 6E16	M	2	HUNTING
22-Nov-24	GRUNDY	333N 7E15	F	4	HUNTING
22-Nov-24	GRUNDY	333N 6E15	M	2	HUNTING
22-Nov-24	GRUNDY	333N 6E24	M	2	HUNTING
23-Nov-24	OGLE	341N 1E 8	F	2	HUNTING
23-Nov-24	JODAVIESS	427N 4E 4	F	4	HUNTING
23-Nov-24	LASALLE	333N 4E 9	M	3	HUNTING
23-Nov-24	JODAVIESS	428N 1E21	M	2	HUNTING
23-Nov-24	JODAVIESS	426N 5E 8	M	2	HUNTING
23-Nov-24	JODAVIESS	429N 2E27	F	2	HUNTING
23-Nov-24	STEPHENSON	426N 5E10	F	3	HUNTING
23-Nov-24	JODAVIESS	428N 1W35	M	3	HUNTING
23-Nov-24	JODAVIESS	427N 4E24	F	4	HUNTING
23-Nov-24	JODAVIESS	427N 4E26	M	2	HUNTING
23-Nov-24	JODAVIESS	429N 1E36	F	2	HUNTING
23-Nov-24	JODAVIESS	428N 1E 2	F	2	HUNTING
23-Nov-24	JODAVIESS	428N 1E28	M	2	HUNTING
23-Nov-24	KENDALL	337N 6E11	F	1	HUNTING
23-Nov-24	KENDALL	337N 6E29	F	1	HUNTING
23-Nov-24	LASALLE	335N 5E15	M	2	HUNTING
23-Nov-24	JODAVIESS	428N 1E 1	M	1	HUNTING
23-Nov-24	MCHENRY	346N 5E 4	F	1	HUNTING
23-Nov-24	OGLE	424N 9E 6	M	1	HUNTING
23-Nov-24	OGLE	423N11E21	F	1	HUNTING
23-Nov-24	OGLE	342N 2E30	M	4	HUNTING
23-Nov-24	OGLE	425N10E26	M	1	HUNTING

Appendix B. Continued.

Date Collected	County	Township, Range, Section	Sex	Age (yrs)	Collection Method
23-Nov-24	OGLE	423N11E26	M	2	HUNTING
23-Nov-24	LASALLE	336N 5E24	F	2	HUNTING
23-Nov-24	OGLE	423N11E22	M	4	HUNTING
23-Nov-24	LASALLE	334N 4E21	M	2	HUNTING
23-Nov-24	MCHENRY	344N 7E11	M	3	HUNTING
23-Nov-24	MCHENRY	344N 6E13	M	2	HUNTING
23-Nov-24	LASALLE	331N 4E28	M	2	HUNTING
23-Nov-24	LIVINGSTON	330N 4E16	M	4	HUNTING
23-Nov-24	LIVINGSTON	329N 4E20	M	1	HUNTING
23-Nov-24	OGLE	422N10E15	M	2	HUNTING
23-Nov-24	WINNEBAGO	426N10E25	M	1	HUNTING
23-Nov-24	JODAVIESS	426N 4E 9	F	3	HUNTING
23-Nov-24	GRUNDY	333N 7E19	M	3	HUNTING
23-Nov-24	GRUNDY	333N 6E14	M	4	HUNTING
23-Nov-24	GRUNDY	333N 6E14	M	1	HUNTING
23-Nov-24	GRUNDY	331N 7E 8	M	2	HUNTING
23-Nov-24	LASALLE	333N 5E31	M	2	HUNTING
23-Nov-24	GRUNDY	333N 6E23	M	2	HUNTING
23-Nov-24	GRUNDY	334N 6E22	M	1	HUNTING
23-Nov-24	GRUNDY	333N 7E20	M	5	HUNTING
23-Nov-24	WILL	332N 9E16	F	4	HUNTING
23-Nov-24	GRUNDY	333N 6E36	M	2	HUNTING
23-Nov-24	CARROLL	425N 5E10	M	3	HUNTING
23-Nov-24	GRUNDY	333N 7E19	F	2	HUNTING
23-Nov-24	CARROLL	425N 4E20	F	5	HUNTING
23-Nov-24	LASALLE	333N 5E31	M	4	HUNTING
23-Nov-24	CARROLL	425N 5E21	M	4	HUNTING
23-Nov-24	CARROLL	423N 4E 3	M	2	HUNTING
23-Nov-24	CARROLL	425N 4E12	M	2	HUNTING
23-Nov-24	CARROLL	425N 4E27	M	3	HUNTING
23-Nov-24	CARROLL	425N 5E24	M	2	HUNTING
23-Nov-24	CARROLL	425N 4E 4	M	3	HUNTING
23-Nov-24	BOONE	346N 3E19	F	2	HUNTING
23-Nov-24	BOONE	345N 4E30	F	4	HUNTING
23-Nov-24	MCHENRY	346N 6E30	F	4	HUNTING
23-Nov-24	MCHENRY	345N 7E35	M	1	HUNTING
23-Nov-24	MCHENRY	346N 6E30	M	3	HUNTING
23-Nov-24	LASALLE	335N 4E33	M	2	HUNTING
23-Nov-24	CARROLL	425N 3E12	M	2	HUNTING
23-Nov-24	JODAVIESS	427N 4E26	F	1	HUNTING
23-Nov-24	JODAVIESS	426N 4E13	M	2	HUNTING
23-Nov-24	JODAVIESS	426N 3E31	F	2	HUNTING
23-Nov-24	JODAVIESS	428N 1W25	M	3	HUNTING
23-Nov-24	JODAVIESS	426N 3E13	M	1	HUNTING
23-Nov-24	WINNEBAGO	346N 1E17	M	1	HUNTING

Appendix B. Continued.

Date Collected	County	Township, Range, Section	Sex	Age (yrs)	Collection Method
24-Nov-24	GRUNDY	333N 8E13	M	3	HUNTING
24-Nov-24	WINNEBAGO	428N10E34	F	2	HUNTING
24-Nov-24	CARROLL	423N 4E26	M	1	HUNTING
24-Nov-24	MCHENRY	345N 6E 5	F	4	HUNTING
24-Nov-24	DEKALB	342N 3E 5	M	1	HUNTING
24-Nov-24	MCHENRY	345N 6E32	M	3	HUNTING
24-Nov-24	BOONE	344N 3E 6	M	2	ROADKILL
24-Nov-24	MCHENRY	346N 6E 9	M	3	HUNTING
24-Nov-24	WINNEBAGO	343N 1E26	M	3	HUNTING
24-Nov-24	WILL	332N10E22	M	2	HUNTING
24-Nov-24	JODAVIESS	429N 2E32	F	2	HUNTING
24-Nov-24	JODAVIESS	428N 3E21	M	1	HUNTING
24-Nov-24	STEPHENSON	427N 9E14	M	3	HUNTING
24-Nov-24	STEPHENSON	427N 6E14	F	1	HUNTING
24-Nov-24	BOONE	345N 3E21	M	2	HUNTING
24-Nov-24	WILL	334N 9E16	M	2	HUNTING
24-Nov-24	JODAVIESS	428N 2E 7	M	1	HUNTING
24-Nov-24	JODAVIESS	429N 1E13	M	2	HUNTING
24-Nov-24	JODAVIESS	426N 5E 8	F	3	HUNTING
24-Nov-24	JODAVIESS	429N 1E13	M	1	HUNTING
24-Nov-24	JODAVIESS	426N 3E32	F	2	HUNTING
24-Nov-24	JODAVIESS	426N 4E27	F	5	HUNTING
24-Nov-24	JODAVIESS	427N 1E 5	F	1	HUNTING
24-Nov-24	STEPHENSON	426N 8E35	M	2	HUNTING
24-Nov-24	MCHENRY	345N 7E15	M	3	HUNTING
24-Nov-24	GRUNDY	333N 7E36	M	4	HUNTING
24-Nov-24	GRUNDY	334N 8E28	F	1	HUNTING
24-Nov-24	GRUNDY	332N 6E 4	F	1	HUNTING
24-Nov-24	GRUNDY	333N 6E29	F	2	HUNTING
24-Nov-24	GRUNDY	333N 7E17	F	3	HUNTING
24-Nov-24	GRUNDY	333N 6E19	M	2	HUNTING
24-Nov-24	BOONE	346N 3E 3	M	2	HUNTING
24-Nov-24	MCHENRY	345N 5E 5	M	2	HUNTING
24-Nov-24	WINNEBAGO	346N 1E16	M	3	HUNTING
24-Nov-24	GRUNDY	332N 6E 4	F	3	HUNTING
24-Nov-24	GRUNDY	333N 6E15	M	2	HUNTING
24-Nov-24	LASALLE	333N 4E23	M	2	HUNTING
24-Nov-24	WINNEBAGO	345N 1E15	M	1	HUNTING
24-Nov-24	GRUNDY	332N 6E 4	F	2	HUNTING
24-Nov-24	GRUNDY	333N 6E 9	M	3	HUNTING
24-Nov-24	GRUNDY	333N 6E31	M	2	HUNTING
24-Nov-24	LASALLE	333N 4E23	M	4	HUNTING
24-Nov-24	LASALLE	333N 1E 2	F	3	HUNTING
24-Nov-24	OGLE	424N10E33	M	2	HUNTING
24-Nov-24	OGLE	422N 9E 5	F	2	HUNTING

Appendix B. Continued.

Date Collected	County	Township, Range, Section	Sex	Age (yrs)	Collection Method
24-Nov-24	OGLE	424N 9E32	M	1	HUNTING
24-Nov-24	CARROLL	424N 3E14	M	2	HUNTING
24-Nov-24	JODAVIESS	427N 4E33	F	5	HUNTING
24-Nov-24	LIVINGSTON	328N 8E12	M	3	HUNTING
25-Nov-24	JODAVIESS	428N 1W18	M	2	HUNTING
25-Nov-24	GRUNDY	333N 6E14	M	5	HUNTING
25-Nov-24	GRUNDY	333N 6E29	M	2	HUNTING
25-Nov-24	GRUNDY	331N 7E 4	M	5	HUNTING
26-Nov-24	LASALLE	333N 3E12	M	4	HUNTING
26-Nov-24	JODAVIESS	428N 1W 3	M	3	HUNTING
26-Nov-24	GRUNDY		M	5	HUNTING
26-Nov-24	MCHENRY	346N 5E19	M	2	SUSPECT
27-Nov-24	LIVINGSTON	329N 5E 6	M	4	HUNTING
27-Nov-24	LEE	422N10E34	F	2	HUNTING
29-Nov-24	LASALLE	335N 4E22	M	2	HUNTING
29-Nov-24	GRUNDY	331N 6E36	M	5	HUNTING
29-Nov-24	LASALLE	335N 4E23	M	3	HUNTING
30-Nov-24	LIVINGSTON	327N 6E11	M	3	HUNTING
1-Dec-24	MARSHALL	330N 1E 8	M	4	HUNTING
1-Dec-24	MARSHALL	330N 1E 8	M	4	HUNTING
2-Dec-24	JODAVIESS	426N 4E 2	M	2	HUNTING
3-Dec-24	KANE	341N 7E22	M	3	HUNTING
3-Dec-24	JODAVIESS	428N 3E10	M	A	HUNTING
3-Dec-24	PUTNAM	331N 2W 1	M	3	HUNTING
5-Dec-24	GRUNDY	333N 7E21	M	2	HUNTING
5-Dec-24	WILL	332N10E 8	M	3	HUNTING
5-Dec-24	GRUNDY	333N 6E21	F	5	HUNTING
5-Dec-24	GRUNDY	333N 6E21	M	3	HUNTING
5-Dec-24	MCHENRY	346N 6E18	M	2	HUNTING
5-Dec-24	GRUNDY	333N 8E18	F	2	HUNTING
5-Dec-24	MCHENRY	346N 5E13	M	3	HUNTING
5-Dec-24	OGLE	423N11E14	F	2	HUNTING
5-Dec-24	MCHENRY	345N 5E24	M	2	HUNTING
5-Dec-24	GRUNDY	333N 7E19	F	2	HUNTING
5-Dec-24	STEPHENSON	426N 5E26	M	3	HUNTING
5-Dec-24	OGLE	424N10E31	F	2	HUNTING
5-Dec-24	MCHENRY	343N 8E14	M	3	HUNTING
5-Dec-24	STEPHENSON	427N 9E30	M	5	HUNTING
5-Dec-24	DEKALB	341N 5E18	M	3	HUNTING
5-Dec-24	GRUNDY	333N 6E24	F	4	HUNTING
5-Dec-24	LASALLE	333N 5E31	M	2	HUNTING
5-Dec-24	LASALLE	332N 5E 5	M	3	HUNTING
5-Dec-24	LASALLE	333N 5E30	F	1	HUNTING
5-Dec-24	GRUNDY	333N 7E19	F	1	HUNTING
5-Dec-24	GRUNDY	333N 8E17	M	2	HUNTING

Appendix B. Continued.

Date Collected	County	Township, Range, Section	Sex	Age (yrs)	Collection Method
6-Dec-24	JODAVIESS	427N 4E28	F	2	HUNTING
6-Dec-24	STEPHENSON	427N 8E34	F	2	HUNTING
6-Dec-24	STEPHENSON	428N 6E20	F	3	HUNTING
6-Dec-24	OGLE	342N 1E28	M	1	HUNTING
6-Dec-24	OGLE	425N 9E21	M	3	HUNTING
6-Dec-24	OGLE	425N11E22	F	2	HUNTING
6-Dec-24	WINNEBAGO	429N11E35	M	2	HUNTING
6-Dec-24	LASALLE	331N 4E34	F	2	HUNTING
6-Dec-24	LASALLE	336N 5E35	M	4	HUNTING
6-Dec-24	OGLE	422N11E 4	F	2	HUNTING
6-Dec-24	GRUNDY	333N 8E25	M	2	HUNTING
6-Dec-24	JODAVIESS	427N 5E 6	F	4	HUNTING
6-Dec-24	WINNEBAGO	345N 1E 8	M	3	HUNTING
6-Dec-24	WINNEBAGO	429N10E28	F	2	HUNTING
6-Dec-24	CARROLL	425N 4E13	M	2	HUNTING
6-Dec-24	CARROLL	425N 4E13	F	3	HUNTING
6-Dec-24	MCHENRY	345N 6E21	F	2	HUNTING
6-Dec-24	CARROLL	425N 5E16	F	2	HUNTING
6-Dec-24	CARROLL	423N 4E 9	M	1	HUNTING
6-Dec-24	BOONE	345N 4E28	F	3	HUNTING
6-Dec-24	MCHENRY	346N 6E33	F	1	HUNTING
6-Dec-24	BOONE	343N 4E 3	F	3	HUNTING
6-Dec-24	MCHENRY	345N 5E12	M	2	HUNTING
6-Dec-24	JODAVIESS	426N 5E18	M	2	HUNTING
6-Dec-24	JODAVIESS	427N 1E12	F	2	HUNTING
6-Dec-24	GRUNDY	333N 7E13	F	2	HUNTING
6-Dec-24	GRUNDY	332N 7E19	F	1	HUNTING
6-Dec-24	GRUNDY	333N 6E32	F	5	HUNTING
6-Dec-24	WINNEBAGO	427N10E 6	M	2	HUNTING
6-Dec-24	JODAVIESS	429N 2W27	M	2	HUNTING
6-Dec-24	LASALLE	336N 4E27	M	4	HUNTING
6-Dec-24	JODAVIESS	429N 2E31	M	1	HUNTING
6-Dec-24	JODAVIESS	428N 1W12	M	2	HUNTING
6-Dec-24	JODAVIESS	428N 1E26	M	2	HUNTING
6-Dec-24	JODAVIESS	428N 1E12	M	2	HUNTING
6-Dec-24	JODAVIESS	426N 4E 5	M	1	HUNTING
6-Dec-24	WILL	332N10E29	M	1	HUNTING
7-Dec-24	GRUNDY	334N 8E18	F	2	HUNTING
7-Dec-24	BOONE	345N 3E21	M	3	HUNTING
7-Dec-24	WINNEBAGO	428N11E19	M	2	HUNTING
7-Dec-24	LASALLE	333N 1E13	M	3	HUNTING
7-Dec-24	LASALLE	331N 3E15	F	4	HUNTING
7-Dec-24	LASALLE	333N 5E 7	M	3	HUNTING
7-Dec-24	BOONE	345N 3E 6	F	4	HUNTING
7-Dec-24	GRUNDY	333N 7E 2	M	2	HUNTING

Appendix B. Continued.

Date Collected	County	Township, Range, Section	Sex	Age (yrs)	Collection Method
7-Dec-24	GRUNDY	333N 6E16	M	1	HUNTING
7-Dec-24	BOONE	345N 4E30	M	1	HUNTING
7-Dec-24	STEPHENSON	426N 9E 5	M	3	HUNTING
7-Dec-24	WINNEBAGO	428N10E33	M	2	HUNTING
7-Dec-24	GRUNDY	333N 8E19	F	1	HUNTING
7-Dec-24	MCHENRY	344N 7E14	F	1	HUNTING
7-Dec-24	MCHENRY	343N 6E 5	M	2	HUNTING
7-Dec-24	CARROLL	425N 4E11	M	3	HUNTING
7-Dec-24	JODAVIESS	428N 1E 1	M	1	HUNTING
7-Dec-24	JODAVIESS	429N 1E22	M	4	HUNTING
7-Dec-24	JODAVIESS	428N 1E12	M	2	HUNTING
7-Dec-24	JODAVIESS	429N 1E13	M	1	HUNTING
7-Dec-24	OGLE	423N11E22	F	1	HUNTING
7-Dec-24	STEPHENSON	427N 9E 9	F	2	HUNTING
7-Dec-24	GRUNDY		M	3	HUNTING
7-Dec-24	LASALLE	335N 5E15	F	3	HUNTING
7-Dec-24	CARROLL	425N 4E23	F	2	HUNTING
7-Dec-24	JODAVIESS	426N 5E31	F	2	HUNTING
7-Dec-24	JODAVIESS	428N 1E15	F	2	HUNTING
7-Dec-24	JODAVIESS	428N 2E 9	M	2	HUNTING
8-Dec-24	DEKALB	342N 3E17	F	3	HUNTING
8-Dec-24	BOONE	344N 3E29	M	2	HUNTING
8-Dec-24	GRUNDY	333N 6E 8	F	2	HUNTING
8-Dec-24	JODAVIESS	426N 4E36	F	2	HUNTING
8-Dec-24	BOONE	343N 4E 8	F	2	HUNTING
8-Dec-24	STEPHENSON	429N 6E25	M	2	HUNTING
8-Dec-24	OGLE	423N 9E15	M	3	HUNTING
8-Dec-24	OGLE	424N 9E12	F	2	HUNTING
8-Dec-24	JODAVIESS	426N 5E16	M	4	HUNTING
8-Dec-24	GRUNDY	332N 7E 7	F	2	HUNTING
8-Dec-24	CARROLL	425N 3E23	M	3	HUNTING
8-Dec-24	WINNEBAGO	346N 1E30	F	3	HUNTING
8-Dec-24	STEPHENSON	427N 7E21	M	1	HUNTING
8-Dec-24	STEPHENSON	428N 6E34	F	3	HUNTING
8-Dec-24	STEPHENSON	429N 6E33	F	3	HUNTING
8-Dec-24	JODAVIESS	429N 1E26	F	2	HUNTING
8-Dec-24	MCHENRY	346N 6E19	M	1	HUNTING
8-Dec-24	WILL	332N10E14	F	4	HUNTING
8-Dec-24	STEPHENSON	427N 8E35	F	2	HUNTING
8-Dec-24	DEKALB	337N 3E15	M	3	HUNTING
9-Dec-24	LASALLE	333N 5E22	M	2	HUNTING
9-Dec-24	KANE	342N 7E10	M	2	SUSPECT
9-Dec-24	LEE	420N11E24	F	4	HUNTING
9-Dec-24	LEE	420N11E24	F	4	HUNTING
11-Dec-24	CARROLL	425N 6E13	M	2	HUNTING

Appendix B. Continued.

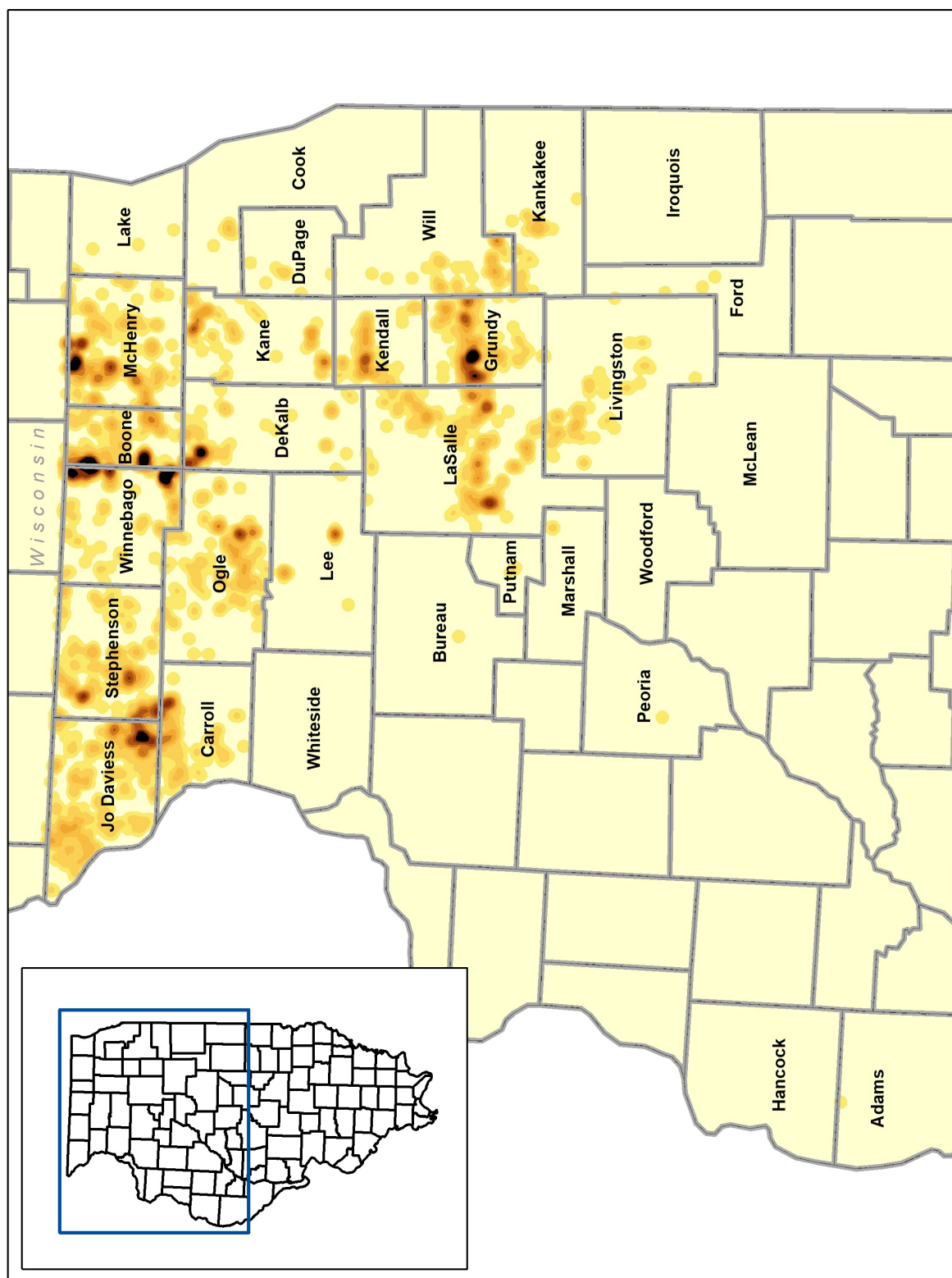
Date Collected	County	Township, Range, Section	Sex	Age (yrs)	Collection Method
12-Dec-24	DUPAGE	339N 9E14	M	A	SHARPSHOOTING
13-Dec-24	JODAVIESS	427N 2E 7	M	4	HUNTING
13-Dec-24	GRUNDY	333N 8E21	F	4	SUSPECT
14-Dec-24	GRUNDY	333N 7E13	F	2	HUNTING
14-Dec-24	MCHENRY	343N 6E 7	M	2	HUNTING
16-Dec-24	JODAVIESS	426N 4E36	M	5	HUNTING
17-Dec-24	MCHENRY	345N 5E12	F	1	HUNTING
23-Dec-24	JODAVIESS	429N 2E31	M	2	HUNTING
27-Dec-24	MCHENRY	344N 6E17	F	2	HUNTING
27-Dec-24	LEE	420N11E24	F	2	HUNTING
27-Dec-24	GRUNDY	333N 7E13	F	5	HUNTING
27-Dec-24	JODAVIESS	427N 3E15	M	4	HUNTING
29-Dec-24	GRUNDY	333N 8E 1	M	3	HUNTING
30-Dec-24	DEKALB	342N 3E21	M	1	HUNTING
31-Dec-24	LEE	422N10E34	M	1	HUNTING
31-Dec-24	OGLE	423N11E36	M	3	HUNTING
2-Jan-25	WILL	336N 9E27	M	3	ROADKILL
2-Jan-25	GRUNDY	333N 8E18	F	1	HUNTING
6-Jan-25	GRUNDY	333N 8E23	M	3	SUSPECT
6-Jan-25	KANE	338N 6E26	F	1	HUNTING
9-Jan-25	DUPAGE	339N 9E11	M	A	SHARPSHOOTING
9-Jan-25	DUPAGE	339N 9E 1	M	A	SHARPSHOOTING
15-Jan-25	JODAVIESS	428N 2E29	F	F	SHARPSHOOTING
16-Jan-25	WILL	332N 9E14	M	A	SHARPSHOOTING
16-Jan-25	WILL	332N 9E16	M	A	SHARPSHOOTING
17-Jan-25	GRUNDY	333N 7E19	F	3	HUNTING
18-Jan-25	JODAVIESS	428N 1W12	M	4	HUNTING
18-Jan-25	GRUNDY	333N 7E19	M	1	HUNTING
18-Jan-25	GRUNDY	333N 7E19	M	2	HUNTING
18-Jan-25	GRUNDY	333N 7E19	F	2	HUNTING
20-Jan-25	KANE	342N 7E10	F	4	SHARPSHOOTING
20-Jan-25	WINNEBAGO	343N 2E24	F	2	SHARPSHOOTING
20-Jan-25	KANE	341N 6E13	F	1	HUNTING
21-Jan-25	JODAVIESS	427N 5E31	F	3	SHARPSHOOTING
22-Jan-25	LEE	420N11E23	M	2	SUSPECT
22-Jan-25	OGLE	423N11E 8	M	2	SHARPSHOOTING
22-Jan-25	KANE	338N 7E11	M	1	SHARPSHOOTING
22-Jan-25	WINNEBAGO	343N 2E21	F	F	SHARPSHOOTING
22-Jan-25	WINNEBAGO	343N 2E21	F	1	SHARPSHOOTING
22-Jan-25	WINNEBAGO	343N 2E14	M	3	SHARPSHOOTING
22-Jan-25	WINNEBAGO	343N 2E14	M	2	SHARPSHOOTING
22-Jan-25	KANE	342N 8E12	M	4	SHARPSHOOTING
27-Jan-25	JODAVIESS	427N 5E31	M	2	SHARPSHOOTING
27-Jan-25	OGLE	423N10E12	M	1	SHARPSHOOTING
27-Jan-25	WINNEBAGO	343N 2E14	F	1	SHARPSHOOTING

Appendix B. Continued.

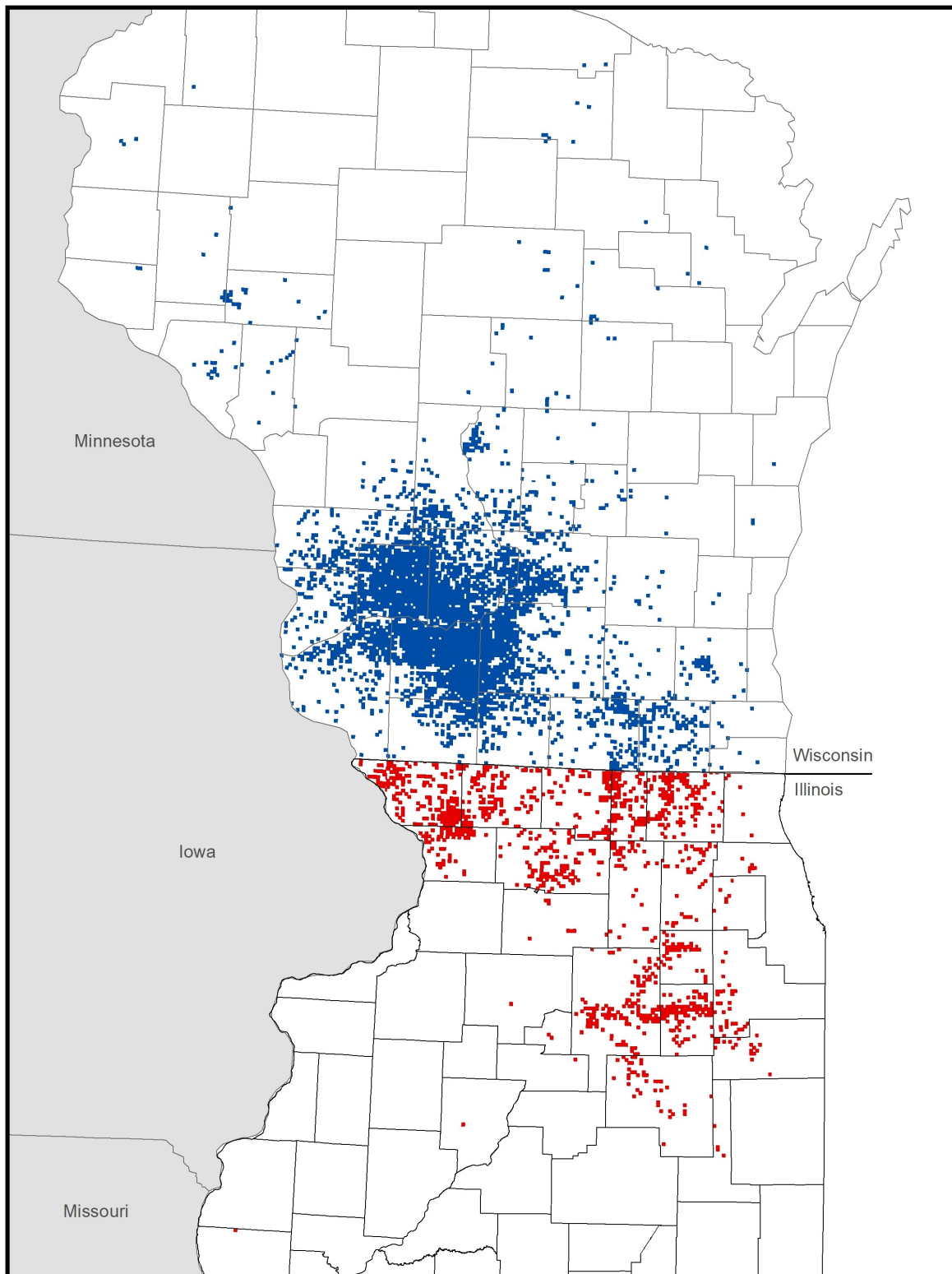
Date Collected	County	Township, Range, Section	Sex	Age (yrs)	Collection Method
27-Jan-25	WINNEBAGO	343N 2E24	F	1	SHARPSHOOTING
28-Jan-25	CARROLL	425N 4E 1	M	3	SHARPSHOOTING
28-Jan-25	JODAVIESS	426N 4E 2	F	3	SHARPSHOOTING
28-Jan-25	JODAVIESS	426N 4E31	M	1	SHARPSHOOTING
28-Jan-25	CARROLL	425N 4E 1	M	2	SHARPSHOOTING
28-Jan-25	OGLE	423N11E36	M	1	SHARPSHOOTING
28-Jan-25	CARROLL	423N 5E14	M	F	SHARPSHOOTING
29-Jan-25	BOONE	345N 4E28	F	2	HUNTING
29-Jan-25	WINNEBAGO	343N 2E15	M	1	SHARPSHOOTING
29-Jan-25	WINNEBAGO	343N 2E15	M	F	SHARPSHOOTING
29-Jan-25	BOONE	344N 4E 2	M	3	HUNTING
29-Jan-25	MCHENRY	346N 7E19	F	2	HUNTING
29-Jan-25	MCHENRY	346N 7E19	F	3	HUNTING
29-Jan-25	JODAVIESS	426N 4E26	M	F	SHARPSHOOTING
30-Jan-25	JODAVIESS	426N 4E16	F	4	SHARPSHOOTING
30-Jan-35	OGLE	423N10E23	M	1	SHARPSHOOTING
30-Jan-25	CARROLL	425N 3E21	M	1	SHARPSHOOTING
1-Feb-25	STEPHENSON	427N 6E10	F	3	ROADKILL
3-Feb-25	WINNEBAGO	343N 2E21	M	2	SHARPSHOOTING
3-Feb-25	WINNEBAGO	343N 2E14	F	3	SHARPSHOOTING
3-Feb-25	WINNEBAGO	346N 1E 3	M	3	SHARPSHOOTING
4-Feb-25	WINNEBAGO	426N11E36	M	2	SHARPSHOOTING
4-Feb-25	WINNEBAGO	426N11E36	M	3	SHARPSHOOTING
4-Feb-25	WINNEBAGO	426N11E36	M	2	SHARPSHOOTING
4-Feb-25	OGLE	423N11E36	F	3	SHARPSHOOTING
4-Feb-25	OGLE	423N11E36	M	1	SHARPSHOOTING
4-Feb-25	OGLE	423N11E36	F	2	SHARPSHOOTING
4-Feb-25	OGLE	423N11E14	M	3	SHARPSHOOTING
5-Feb-25	JODAVIESS	426N 4E13	F	3	SHARPSHOOTING
5-Feb-25	WINNEBAGO	345N 2E24	F	F	SHARPSHOOTING
5-Feb-25	JODAVIESS	426N 4E13	M	1	SHARPSHOOTING
5-Feb-25	JODAVIESS	427N 2E30	F	3	SHARPSHOOTING
5-Feb-25	WINNEBAGO	345N 2E24	F	F	SHARPSHOOTING
5-Feb-25	JODAVIESS	426N 4E 2	M	2	SHARPSHOOTING
6-Feb-25	KANE	341N 7E27	M	2	SHARPSHOOTING
11-Feb-25	OGLE	423N10E20	M	2	SHARPSHOOTING
11-Feb-25	JODAVIESS	426N 4E26	M	1	SHARPSHOOTING
11-Feb-25	JODAVIESS	426N 3E31	M	3	SHARPSHOOTING
11-Feb-25	JODAVIESS	428N 1E29	M	3	HUNTING
12-Feb-25	WINNEBAGO	343N 1E26	F	2	SHARPSHOOTING
13-Feb-25	OGLE	423N10E12	F	2	SHARPSHOOTING
13-Feb-25	OGLE	423N11E14	F	F	SHARPSHOOTING
13-Feb-25	OGLE	423N10E12	M	3	SHARPSHOOTING
18-Feb-25	WINNEBAGO	345N 2E24	M	1	SHARPSHOOTING
18-Feb-25	JODAVIESS	427N 5E31	M	1	SHARPSHOOTING

Appendix B. Continued.

Date Collected	County	Township, Range, Section	Sex	Age (yrs)	Collection Method
19-Feb-25	KANKAKEE	331N11E30	M	3	SHARPSHOOTING
19-Feb-25	WINNEBAGO	343N 1E26	M	3	SHARPSHOOTING
19-Feb-25	PEORIA	4 9N 6E20	M	2	SUSPECT
19-Feb-25	KANE	342N 7E10	M	2	SHARPSHOOTING
24-Feb-25	COOK	341N11E17	M	2	SHARPSHOOTING
24-Feb-25	KANE	342N 8E12	M	3	SHARPSHOOTING
24-Feb-25	JODAVIESS	426N 4E 2	M	2	SHARPSHOOTING
24-Feb-25	JODAVIESS	427N 2E30	M	2	SHARPSHOOTING
24-Feb-25	WINNEBAGO	343N 1E27	M	4	SHARPSHOOTING
24-Feb-25	DEKALB	342N 3E22	M	2	SHARPSHOOTING
24-Feb-25	WILL	332N10E14	M	2	SHARPSHOOTING
25-Feb-25	KANE	338N 6E24	F	2	SHARPSHOOTING
26-Feb-25	JODAVIESS	426N 4E31	M	2	SHARPSHOOTING
26-Feb-25	JODAVIESS	428N 2E29	M	1	SHARPSHOOTING
27-Feb-25	WINNEBAGO	343N 1E26	M	1	SHARPSHOOTING
27-Feb-25	OGLE	423N10E19	F	2	SHARPSHOOTING
27-Feb-25	CARROLL	425N 3E22	M	F	SHARPSHOOTING
27-Feb-25	KANE	338N 7E 9	M	1	SHARPSHOOTING
27-Feb-25	OGLE	423N11E36	F	4	SHARPSHOOTING
3-Mar-25	JODAVIESS	426N 4E 2	F	5	SHARPSHOOTING
3-Mar-25	WILL	332N10E14	F	2	SHARPSHOOTING
3-Mar-25	DEKALB	342N 3E22	M	F	SHARPSHOOTING
3-Mar-25	JODAVIESS	426N 4E 2	M	1	SHARPSHOOTING
4-Mar-25	OGLE	423N11E36	M	3	SHARPSHOOTING
5-Mar-25	KANKAKEE	331N10E17	M	3	SHARPSHOOTING
5-Mar-25	WINNEBAGO	345N 2E28	F	4	SHARPSHOOTING
5-Mar-25	LEE	422N10E34	M	1	SHARPSHOOTING
5-Mar-25	WINNEBAGO	346N 2E14	M	3	SHARPSHOOTING
6-Mar-25	KANE	342N 7E10	M	1	SHARPSHOOTING
6-Mar-25	JODAVIESS	426N 4E16	F	4	SHARPSHOOTING
6-Mar-25	WINNEBAGO	343N 1E26	M	3	SHARPSHOOTING
10-Mar-25	JODAVIESS	428N 3E26	F	5	SHARPSHOOTING
12-Mar-25	JODAVIESS	426N 3E21	M	2	SHARPSHOOTING
13-Mar-25	WINNEBAGO	346N 1E 3	M	2	SHARPSHOOTING
17-Mar-25	WILL	332N10E14	F	3	SHARPSHOOTING
17-Mar-25	WILL	332N10E14	F	2	SHARPSHOOTING
17-Mar-25	CARROLL	425N 3E15	M	5	SHARPSHOOTING
18-Mar-25	JODAVIESS	427N 1E24	F	3	SHARPSHOOTING
18-Mar-25	JODAVIESS	426N 4E 2	F	3	SHARPSHOOTING
19-Mar-25	KANE	342N 7E10	M	2	SHARPSHOOTING
24-Mar-25	OGLE	423N10E22	M	3	SHARPSHOOTING
24-Mar-25	BOONE	346N 4E16	F	F	SUSPECT



Appendix C. Cumulative distribution and relative intensity of chronic wasting disease in northern Illinois, 2003–2025. Darker areas represent larger numbers of positive deer identified.



Appendix D. Historical distribution of CWD in southern Wisconsin and northern Illinois as of 30 June 2025. Squares represent sections in which CWD has been detected.